



CHIEF PATRON

Shri. L. Gopalakrishnan
Managing Trustee PSG & SONS' Charities

PATRONS

Dr. J.S.Bhuvaneshwaran
Dr. T.M.Subba Rao

Editorial Board:

Dr. Vimal Kumar Govindan
Dr. Pavai Ganesan
Dr. Varunn

✉ psgmedipulse@psgimsr.ac.in

🌐 www.psghospitals.com

☎ +91 82200 13330

ElderCon 2025

*Pioneering
the Path of
Geriatric
Excellence*

PSG HOSPITALS: Delivering Excellence in Complex Surgical Care



Dr. VimalKumar Govindan
Department of
General & Gastro Intestinal Surgery

When it comes to healthcare, some cases challenge both the skill and dedication of the medical team. Recently, the Department of Surgery at PSG Hospitals successfully managed a complex breast condition that required both precision and compassion - a testament to the hospital's expertise and commitment to patient well-being.

A Complex Presentation:

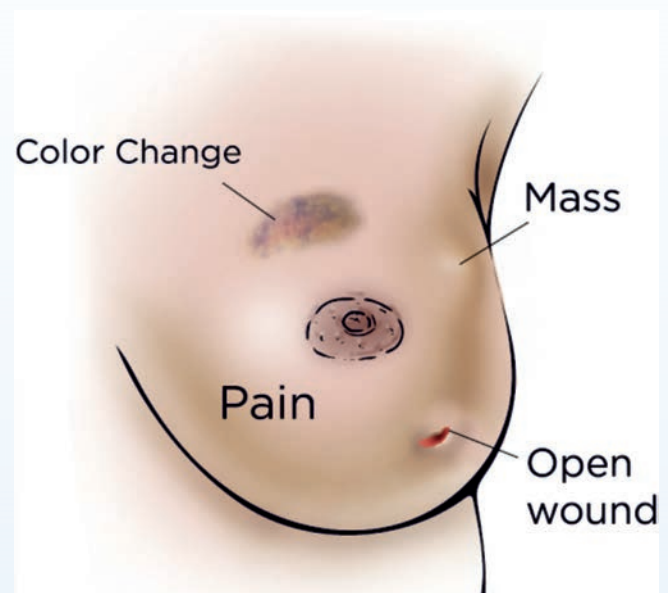
A 71-year-old patient arrived at PSG Hospitals with a prolonged history of breast discomfort and nipple discharge, persisting for over three months. While the symptoms may appear straightforward, further evaluation revealed a rare condition - Granulomatous Mastitis - that required timely surgical intervention to prevent complications.

Our multidisciplinary team, led by expert surgeons and supported by skilled residents, began with a thorough diagnostic process. Detailed examinations, advanced imaging, and laboratory investigations were carried out to confirm the diagnosis and prepare for the safest surgical approach.

Precision Surgery with a Gentle Touch:

Given the nature of the condition, the surgical team

opted for an excision biopsy with duct excision, performed under local anaesthesia. This technique ensured the removal of the affected duct and surrounding inflamed tissue while minimising the patient's discomfort and recovery time. From meticulous incision planning to achieving perfect haemostasis and layered wound closure, every step reflected surgical excellence. The procedure was completed without complications, underscoring PSG Hospitals' commitment to safety and precision.



Post-Operative Care that Makes the Difference:

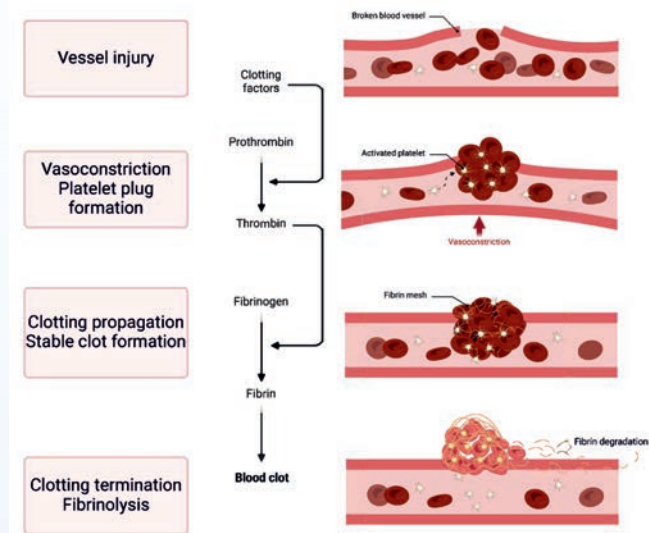
What sets PSG Hospitals apart is not just the surgery, but the holistic approach to healing. Post-operatively, the patient received continuous monitoring, effective pain management, and wound care tailored to promote faster recovery. The hospital's MITHRA Lab on Wheels, Sanjeevani Medicine Delivery, and Vaidya Home Health Services were on standby to ensure seamless care even after discharge.

Within a short hospital stay, the patient's symptoms had significantly improved, and she was discharged in a stable condition - a strong indicator of the quality of surgical and supportive care provided.

Why PSG Hospitals is a Preferred Choice for Surgical Care:

Expertise Across Specialties:

From general surgery to advanced sub-specialties, PSG Hospitals houses a team of highly trained professionals equipped to handle complex medical and surgical conditions. Each case benefits from a collaborative approach involving surgeons, anaesthesiologists, nursing staff, and rehabilitation experts.



Advanced Facilities:

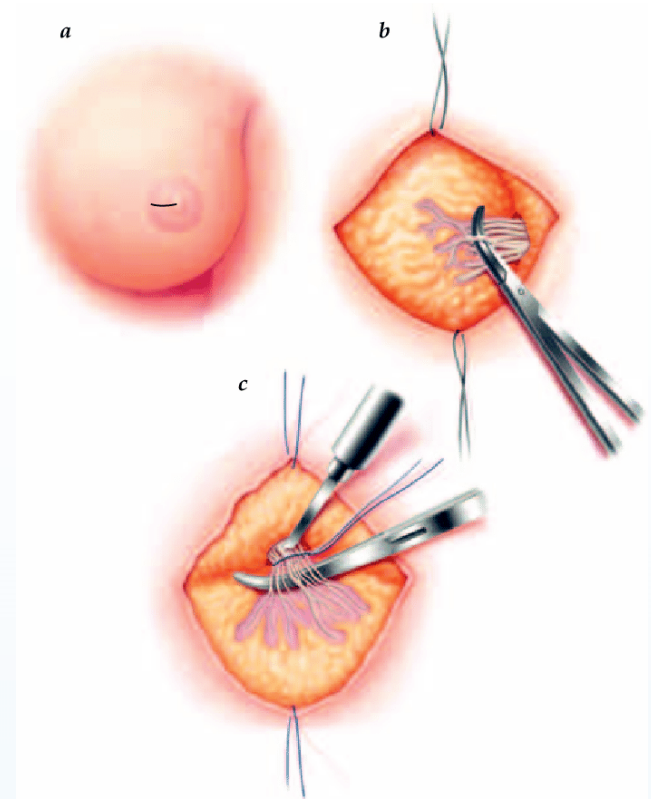
The hospital's infrastructure is designed to match international standards. Modern operating theatres, advanced diagnostic tools, and integrated support services ensure that every patient receives timely and effective treatment.

Patient-Centric Approach:

Beyond medical expertise, PSG Hospitals believes in compassionate care. Patients and their families are kept informed at every step, empowering them to make confident decisions about their health.

Commitment to Recovery:

Recovery doesn't end at discharge. Our follow-up protocols, tele-consultation services, and home health care programs ensure that patients continue to receive medical attention, guidance, and support until they are completely back to health.



A Story of Success:

This recent case stands as a clear example of PSG Hospitals' dedication to turning complex medical challenges into positive recovery stories. Through expert diagnosis, precise surgical execution, and comprehensive aftercare, the patient left our facility not only relieved of her symptoms but also reassured that she was in the safest hands possible.

At PSG Hospitals, we don't just treat illnesses - we restore quality of life.



PSG HOSPITALS HOSTS INAUGURAL ELDERCON 2025 – First Interstate Geriatric Conference

PSG Hospitals, a unit of PSG Institute of Medical Sciences and Research, proudly hosted the ElderCon 2025, the first interstate geriatric conference, under the theme “Healthy Aging – Adding Life to Years.”

The landmark event brought together eminent experts, doctors, and healthcare professionals to address the growing needs of the elderly population and to highlight advancements in geriatric care.



The function was graced by Chief Guest Dr. J.K. Periasamy, Senior Cardiologist, and Guest of Honor Padma Shri Dr. V.S. Natarajan, widely regarded as the Father of Geriatrics in India.

The program began with a soulful prayer song by Dr. Janani, followed by a warm welcome address from Dr. J.S. Bhuvaneshwaran, Director, PSG Super Specialty Hospitals. Dr. S. Mohanavel, Consultant, Department of Geriatrics, presented the theme of the conference, emphasizing the importance of holistic approaches to healthy aging.



In a highlight of the event, a Lifetime Achievement Award was conferred upon Padma Shri Dr. V.S. Natarajan, honoring his pioneering contributions and unwavering dedication as the Founder of the Geriatric Foundation. His oration

inspired participants and reinforced the vital role of geriatric medicine in improving quality of life for the elderly.



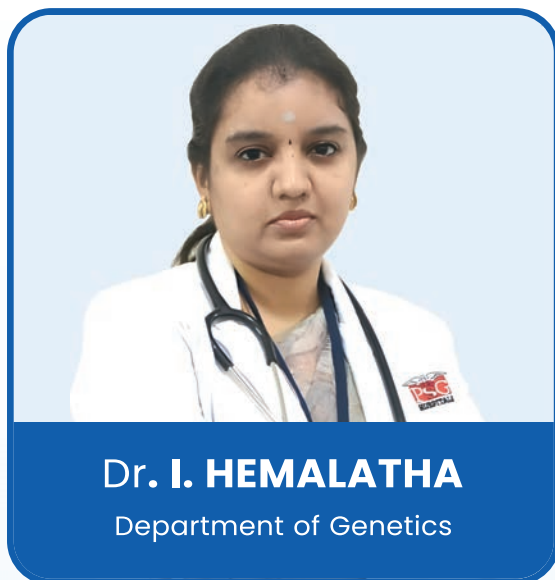
The event also witnessed felicitations by Dr. T.M. Subba Rao, Principal, PSG IMSR & Hospitals, and Dr. T. Balaji, Director, PSG Institute of Oncology. The vote of thanks was delivered by Dr. Rajith, Senior Consultant, Home Health Services.



The program concluded with a networking lunch, fostering collaboration and knowledge exchange among delegates.

ElderCon 2025 marks a milestone in PSG Hospitals' ongoing commitment to advancing geriatric care and promoting healthy aging, reaffirming its mission to add life to years, not just years to life.

REPORTING A RARE CASE OF CHR7P15.3P15.1 (5.81MB) MICRO DELETION SYNDROME - The Shortest Micro-deletion reported ever on Chr7p



Chromosome 7p micro deletion syndrome/ monosomy 7p, is a rare chromosomal disorder. This deletion can lead to a wide range of disorders, of varying severity depending on the specific genes lost.

7p15 deletion syndrome / Hand foot Genital syndrome or Hand foot Uterus syndrome, involves segmental loss of short arm (p arm) of chromosome 7 at cytoband 15. To date around 13 cases have been reported with microdeletion involving the short arm of chromosome 7. Among the cases reported ever our case has the shortest deletion 5.81 Mb, and the phenotypic manifestation depends upon the critical genes lost.

A 29months old female child, first born to Non-consanguineous / endogamous parents, presented with complaints of low birth weight, failure to thrive, developmental delay, recurrent urinary tract infections, requiring frequent hospital admissions. She started independent walking at 20 months of life, she had speech delay which subsequently showed improvement with speech therapy.

Antenatal history was uneventful, except for H/O oligohydramnios at 33 weeks of gestation and symmetrical IUGR., utero -placental insufficiency.

Birth History: Born out of Term LSCS ,B.wt of 2.1 kg , Nil significant perinatal & post -natal events

Family History Nil Significant

On thorough head to foot examination child had microcephaly (HC-44 cm), trigonocephaly, dysmorphic features such as arched eyebrows with medial flare, narrow long palpebral fissures, increased intercanthal distance ,prominent eyes, sharp nasal bridge, nasal bridge smooth at the root of the nose ,rounded nasal tip, flared ala nasai , microtia , posteriorly placed ears, with prominent antihelix, folded ears upper 1/3rd , attached ear lobule, widely spaced teeth, brachydactyly of index finger ,bilateral 5th finger clinodactyly, thumb short and abducted, altered dermatoglyphics .U/L Genu Varum, Bilateral short stubby feet, B/I pes-cavus , walked with incurving toe gait ,?left CTEV,brachydactyly of first toe. External genitalia was normal.

Other Systemic Examination were normal

List of Investigations done elsewhere from birth till date:

- Neurosonogram -Normal
- Peripheral blood karyotyping- 46XX (Normal)
- ECHO cardiogram -Normal
- Ultrasound abdomen showed, bilateral vesico-ureteric reflux, Right Grade 3 and left Grade 1,
- DMSA showed normal functioning kidneys, and no focal cortical scars.

Based on history clinical examination and other investigation reports, chromosomal microdeletion/duplication syndrome was suspected and chromosomal Microarray 750K (Affymetrix Cytoscan 750K Array) was suggested.

CMA 750K analysis reported – CNV arr[GRCh38] 7p15.3p15.1(22,509,040_28,321,977)x1, indicating monosomy for this region.

Discussion:

CMA 750K reports loss of 5.81 Mb involving chr 7 at cytoregion 7p15.3p15.1. This region encompasses 44 OMIM genes and overlaps with 7p15 deletion syndrome previously reported.

HOXA genes have been linked to different human phenotypes, including developmental delay, limb anomalies, and urogenital malformations. HOXA13 is the prime gene among the enlisted. HOXA13 is involved in development of limbs and urogenital system

The most common limb malformation reported in Hand foot Genital syndrome is Mild-to-severe bilateral shortening of the thumbs and great toes, caused primarily by shortening of the distal phalanx and/or the first metacarpal or metatarsal, and results in impaired dexterity or apposition of the thumbs. And a similar kind of presentation was seen in our patient. Urogenital malformations include abnormalities of the ureters and urethra , hypospadias of variable severity in males.

Females may have , Vesicoureteral reflux secondary to ureteric incompetence

- Ectopic ureteral orifices
- Trigonal hypoplasia
- Hypospadiac urethra
- Urinary incontinence
- Small hymenal opening
- Various degrees of incomplete müllerian fusion with or without two cervixes or a longitudinal vaginal

Recurrent urinary tract infections, and chronic pyelonephritis may occur; fertility is normal. Manifestations in male not discussed here.

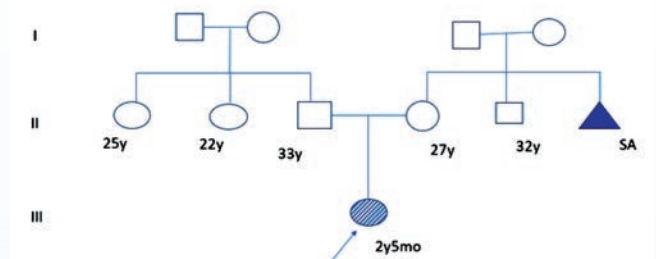
X-Ray Hand and Foot was suggested

Genetic Counselling:

CNV related phenotypic manifestations were communicated with the parents. Mother was

anxious for the past couple of years due to recurrent UTI in the child and failure to gain weight. Aetiology of monosomy in chr7p15.3p15.1 could be either Denovo, or abnormality in parental Karyotype (i.e inversion, insertion, translocation).

Family Pedigree



Hence suggested routine peripheral blood Karyotyping in the parents and further CNV studies if needed, based on which recurrence rates and need for prenatal diagnosis in subsequent pregnancies can be decided.

Child was referred to ENT ,Developmental Paediatrics ,Urology, Paediatric Surgery, Paediatric orthopaedics for multidisciplinary management. Advised for Gynaecology opinion later during pre-pubertal age.



Special Wellness Package at **Rs. 999/-Only**

Vitals (Height, Weight & BMI)
Complete Hemogram | TSH | Blood Glucose - Fasting | Urine Complete | ECG | Creatinine | PAP Smear | Chest X-Ray PA | Serum Bilirubin | Total cholesterol | Doctor Consultation

*** Terms and Conditions apply**

Venue : PSG Hospitals, B-Block

For Appointments : 8220 013 330 / 8754 022 880

A TRIUMPH OVER ADVERSITY: Successful Complex Liver Transplant at PSG Hospitals



Dr. K. R. KIRUBAKARAN
Department of Hepato-Pancreato-
Biliary Surgery & Liver Transplant

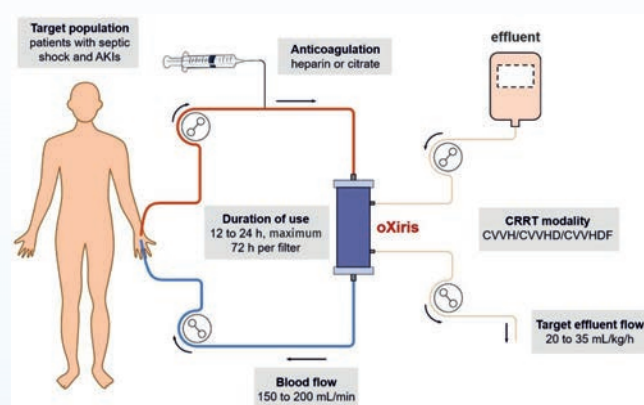
When a 59-year-old gentleman walked into PSG Hospitals, he was battling a life-threatening cascade of illnesses. A known case of diabetes, hypertension, coronary artery disease, obstructive sleep apnea, and cirrhosis due to NASH (Non-Alcoholic Steatohepatitis), he was also diagnosed with acute-on-chronic liver failure. His medical history was further complicated by latent tuberculosis, sepsis (CRE E. coli), chronic kidney injury, and COPD, making his condition one of the most challenging scenarios in transplant medicine.

With a MELD score of 37, indicating critical liver failure, and his organs rapidly deteriorating, his only chance at survival was a liver transplantation. Given the complexity of his condition, the case demanded not only surgical excellence but also a coordinated effort across multiple specialties.

The Surgical Journey:

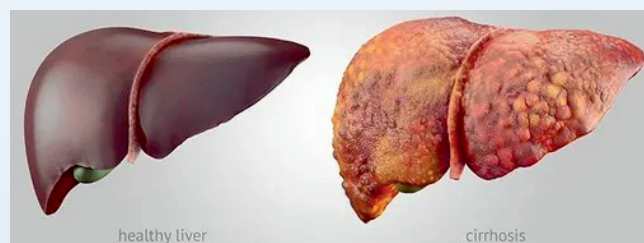
On 20th May 2025, after obtaining high-risk informed consent, he underwent a cadaveric liver transplantation at PSG Hospitals under the leadership of Dr. B. Joseph John, Senior Consultant HPB & Transplant Surgeon, and Dr. K.R. Kirubakaran, Senior Consultant HPB & Liver Transplant Surgeon, along with their highly skilled team.

The surgery revealed a cirrhotic liver, dense adhesions, extensive collaterals, and six liters of ascites. Despite these obstacles, intraoperative Doppler confirmed good blood flow in all vessels — a critical indicator of transplant success. Given the associated hepatorenal syndrome and acute kidney injury, he required continuous renal replacement therapy (CRRT) during surgery.



Overcoming Post - Operative Challenges:

The immediate post-operative period was marked by multiple complications. The patient required ventilatory support, inotropes, antibiotics, antifungals, and albumin infusions. His condition was further complicated by persistent septic shock due to CRE E. coli, acute respiratory issues, and seizure episodes.



A multidisciplinary approach involving transplant surgeons, intensivists, nephrologists, pulmonologists, infectious disease specialists, cardiologists, and neurologists played a pivotal role. His condition gradually stabilized - he was weaned off the ventilator, dialysis was stopped as renal function improved, seizures were controlled, and his liver function showed steady recovery.

By post-operative day 8, his kidneys began functioning on their own, his nutrition improved, and he was mobilized. With careful adjustment of immunosuppressants (Tacrolimus, MMF, and steroids) and continuous monitoring, he was eventually discharged in a stable condition on 5th June 2025.

The Power of Teamwork at PSG Hospitals:

This case stands as a testament to PSG Hospitals' expertise in handling highly complex liver transplant cases. What made this success possible was:

- ✓ A world-class liver transplant program led by experienced HPB and transplant surgeons.
- ✓ State-of-the-art intensive care facilities capable of managing multi-organ failure.
- ✓ 24/7 multidisciplinary coordination across surgery, nephrology, cardiology, pulmonology, infectious diseases, and nutrition.
- ✓ Advanced diagnostic and laboratory support enabling precise treatment modifications.

- ✓ Dedicated transplant coordinators and nursing staff ensuring seamless patient care.

Hope Beyond Limits:

This journey reflects more than just medical excellence – it highlights PSG Hospitals' unwavering commitment to saving lives, even in the most complicated circumstances. From pre-transplant optimization to surgical precision and holistic post-transplant rehabilitation, every step reaffirmed PSG's reputation as a leader in organ transplantation in Tamil Nadu and beyond.

Today, this successful case stands as a symbol of hope for thousands of patients battling end-stage liver disease.

PSG Hospitals – Transforming Lives Through Advanced Liver Transplantation:

Location:

PSG IMSR & Hospitals,
Peelamedu, Coimbatore

Contact:

0422 - 2570170
PSG Multi Organ
Transplant Centre.

Because at PSG Hospitals, we don't just treat patients - we give them a second chance at life.



PSG Hospitals SUPER SPECIALITY

1400+ Bedded Tertiary Care Hospital

P.B. No.1674, Peelamedu, Coimbatore 641004. Phone: 0422 2570170, 4345353.

Helpline & WhatsApp : 8220013330 | For Emergency : 7449 108 108 | Email : enquiry@psgimsr.ac.in Web : www.psghospitals.com



**WHERE ADVANCED HEALTHCARE TECHNOLOGY
& HUMANITY MEET...**



**ONE POINT SOLUTION
FOR ALL YOUR
HEALTHCARE NEEDS**

AFFORDABILITY | ETHICS | SCIENCE | QUALITY | PERSONAL CARE

SPUCON 2025 – A Landmark Gathering in Pediatric Urology

The 13th National and Annual Conference of the Society of Paediatric Urology (SPU), Section of IAPS, was successfully hosted as SPUCON 2025 by the Coimbatore Chapter of Pediatric Surgeons. This prestigious event, themed “Paediatric Urology 360°: Foundations to Future Innovations”, brought together leading experts, surgeons, academicians, and young researchers from across the nation.



The conference was an extraordinary platform that highlighted the latest advancements in pediatric urology, offering a unique blend of scientific sessions, workshops, and interactive discussions. Eminent faculty members shared insights on evolving surgical techniques, groundbreaking research, and futuristic innovations in the management of pediatric urological conditions.



Special attractions of SPUCON 2025 included live surgical demonstrations, skill-building workshops, and thought-provoking keynote addresses that enriched the learning experience for participants.

The event also served as an excellent opportunity for budding surgeons to present their research, exchange ideas, and gain mentorship from senior faculty.



Beyond academic enrichment, the conference fostered collaboration, networking, and the spirit of teamwork in advancing pediatric urology. Delegates appreciated the warm hospitality of the host city, Coimbatore, and commended the meticulous efforts of the organizing committee in curating a memorable and impactful event.



With overwhelming participation and resounding success, SPUCON 2025 stands as a milestone event, reaffirming the commitment of the Society of Paediatric Urology towards nurturing knowledge, inspiring innovations, and improving child healthcare outcomes across India.

WHEN ROUTINE SURGERY GOES WRONG: How PSG Hospitals Turned Around a Life-Threatening Bile Duct Injury



Dr. L. Venkatakrishnan
Head of the Department of
Gastroenterology

When routine medical procedures take an unexpected turn, it takes more than treatment - it takes expertise, coordination, and advanced intervention to set things right. This is the story of a 44-year-old patient who walked into PSG Hospitals in distress and walked out healed - thanks to an extraordinary show of clinical excellence.

A Misstep in Surgery Leads to a Storm of Complications:

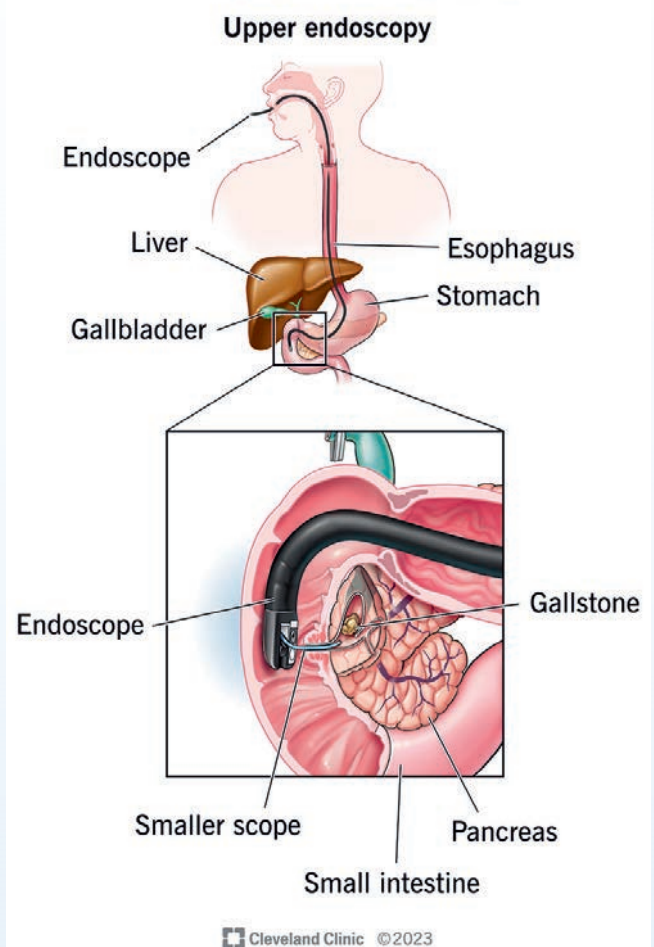
The patient was a healthy individual with no significant prior medical history. Following complaints of gallbladder-related pain, he underwent a laparoscopic cholecystectomy at another hospital - a common surgical procedure performed to remove the gallbladder.

However, shortly after surgery, things started to unravel. He began experiencing intense abdominal pain, bloating, deep yellow discoloration of urine, persistent fever, and chills - all within a week of the procedure. His appetite dropped, and fatigue set in. What seemed like normal postoperative discomfort was rapidly spiraling into something much more serious.

By the time he arrived at PSG Hospitals, Coimbatore, the alarm bells were clear: he was suffering from a

bile duct injury with active leakage, and his condition was deteriorating fast.

ERCP (Endoscopic Retrograde Cholangiopancreatography)



From Suspicion to Precision: A Multi-Modal Diagnostic Approach:

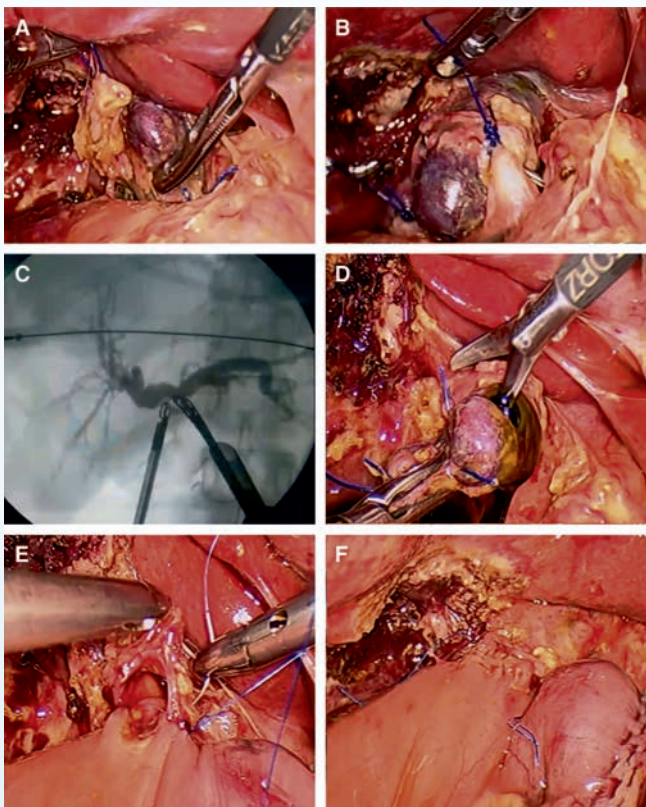
At PSG, the Department of Gastroenterology quickly mobilized. Headed by a senior multidisciplinary team, including hepatobiliary surgeons, radiologists, and infectious disease specialists, the investigation began immediately.

Advanced scans, including MRI and CT of the abdomen, confirmed the worst - a leak from the bile ducts, with large fluid collections near the liver and

significant accumulation of free fluid throughout the abdomen. The reports also noted pleural fluid, perisplenic inflammation, and early signs of sepsis.

The imaging further revealed anatomical variations in the biliary system, making the diagnosis and intervention even more complex. The right sectoral duct, which normally drains part of the liver, was leaking into the abdominal cavity - a rare and technically challenging complication.

In simple terms, bile - a fluid crucial for digestion - was leaking into places it shouldn't, and it was beginning to poison the system.



A Surgical and Endoscopic Rescue:

Faced with this complex injury, the PSG team opted for a two-pronged approach:

01. Endoscopic Retrograde Cholangiopancreatography (ERCP): A stent was inserted to divert bile away from the leak and promote healing. Despite the challenges of altered anatomy, good bile flow was restored from the healthy ducts.

02. Laparoscopic peritoneal lavage and drain placement: This minimally invasive procedure allowed the surgical team to clean the infected abdominal cavity and place drains to remove ongoing bile collection.

Together, these interventions controlled the bile leak, prevented further contamination, and set the foundation for healing.

When Infection Complicates the Picture:

Despite successful drainage and stenting, the patient's condition remained guarded. Fluid samples revealed fungal and bacterial infections, including rare organisms like *Candida tropicalis* and *Enterococcus faecium*. These infections, notoriously difficult to treat, posed a serious risk of widespread sepsis.

The Infectious Disease team worked hand-in-hand with the surgical and gastroenterology departments, monitoring infection markers daily and adjusting treatment protocols. Gradually, his vital signs stabilized.

Teamwork That Transformed a Crisis Into Recovery:

The turning point came during the second week of hospitalization. Follow-up imaging showed reduced bile collections, improved liver function, and minimal fluid retention. Drains were gradually removed, his appetite returned, jaundice began to resolve, and pain subsided.

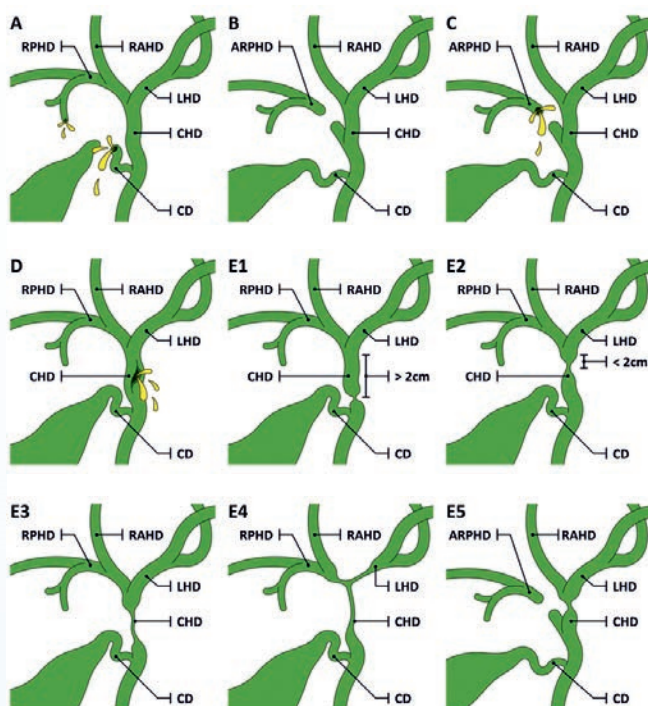
After over two weeks of intensive monitoring, he was finally deemed stable for discharge.

Why This Case Stands Out:

What makes this story remarkable isn't just the complexity - it's how a routine surgery gone wrong was reversed through:

- Cutting-edge endoscopic and laparoscopic intervention
- Real-time imaging and dynamic monitoring

Bile Duct Injury: Strasberg Classification



LHD: Left Hepatic Duct | RAHD: Right Anterior Hepatic Duct | RPHD: Right Posterior Hepatic Duct
ARPHD: Aberrant Right Posterior Hepatic Duct | CHD: Common Hepatic Duct | CD: Cystic Duct

- Microbiology-guided infection control
- Seamless teamwork across specialties

This case illustrates how PSG Hospitals stands tall among tertiary care centers - taking on the most challenging clinical puzzles and solving them with science, skill, and service.

A Message of Reassurance:

For patients and families alike, this case is a reminder: Even when faced with rare complications and mounting risks, the right hospital can make all the difference.

At PSG Hospitals, we do more than treat symptoms - we treat situations others find too complex. With state-of-the-art infrastructure, leading specialists, and an unwavering commitment to patient-centered care, we're prepared for every possibility.

Because at PSG, every challenge is a call to excellence - and every life is worth the fight.



PSG HOSPITALS

Department of Dietetics

Organizes an

International Conference



PSG Oncology Nutrition – 2025 From Bench to Bedside

“Enhancing Outcomes through Evidence Based Practice”

DATE : 6th December, 2025

VENUE : B- Block Auditorium , 2nd Floor , PSG Hospitals



COMPREHENSIVE CARE FOR CHRONIC VENOUS INSUFFICIENCY AT PSG HOSPITALS



Dr. P.R. Murugesan
Department of
Cardiothoracic & Vascular Surgery

The Department of Cardiothoracic Surgery at PSG IMSR & Hospitals, Coimbatore, continues to set high standards in the management of complex vascular conditions, including chronic venous insufficiency (CVI). Through an integrated approach combining clinical expertise, evidence-based treatment, and compassionate care, the department delivers excellent outcomes for patients suffering from recurrent venous ulcers and associated complications.

Expert Diagnosis and Individualized Care:

Chronic venous insufficiency is a long-standing condition that occurs when the veins in the legs are unable to return blood efficiently to the heart, leading to symptoms such as swelling, pain, and ulcer formation. At PSG Hospitals, every case is approached with precision and a focus on the individual's overall health. A recent case of chronic venous insufficiency with a recurrent venous ulcer highlighted the hospital's systematic, multidisciplinary approach to patient recovery.

Under the expert care of Dr. Periyankunan Ramaiya Murugesan, from the Department of Cardiothoracic Surgery, the patient underwent a comprehensive evaluation and structured

management plan. The treatment included intravenous antibiotic therapy, meticulous wound cleaning and dressing, and supportive medical care aimed at infection control and tissue healing. The patient's existing conditions were carefully managed, and the medical team provided guidance on nutrition, wound hygiene, and lifestyle modifications to promote long-term recovery.

Commitment to Healing and Recovery:

The outcome of the treatment was a clear demonstration of PSG Hospitals' commitment to clinical excellence. Through continuous monitoring, the ulcer showed marked improvement, with significant reduction in inflammation and discharge. The patient recovered steadily under hospital supervision and was discharged in a stable condition with detailed follow-up advice and home care instructions.

The discharge plan included continued wound care, maintenance of a salt-restricted balanced diet, limb elevation, and avoidance of prolonged standing - key lifestyle measures to prevent recurrence. The follow-up visit at the Cardiothoracic OPD ensured continuity of care and monitoring of wound healing.

A Model of Multidisciplinary Excellence:

This successful recovery stands as a testament to PSG Hospitals' holistic and team-based approach to complex vascular disorders. The hospital's commitment extends beyond immediate treatment - it focuses on patient education, preventive strategies, and long-term wellness.

At PSG Hospitals, each case is more than a clinical challenge; it is an opportunity to restore health and quality of life. With advanced infrastructure, skilled specialists, and a patient-centered philosophy, the Department of Cardiothoracic Surgery continues to make significant strides in the management of chronic venous diseases and other vascular conditions.

TURNING HOPE INTO HEALING: Comprehensive Management of Acute Lymphoblastic Leukemia at PSG Hospitals



Dr. Sashi Ranjini

Department of Pediatric Oncology

At PSG Hospitals, every story of recovery stands as a powerful reflection of hope, teamwork, and medical excellence. Among the many success stories that highlight the hospital's commitment to compassionate, evidence-based care, one remarkable case of acute lymphoblastic leukemia (ALL) demonstrates how coordinated, multidisciplinary treatment can transform a life-threatening illness into a story of renewed strength and healing.

Diagnostic Challenge and Discovery:

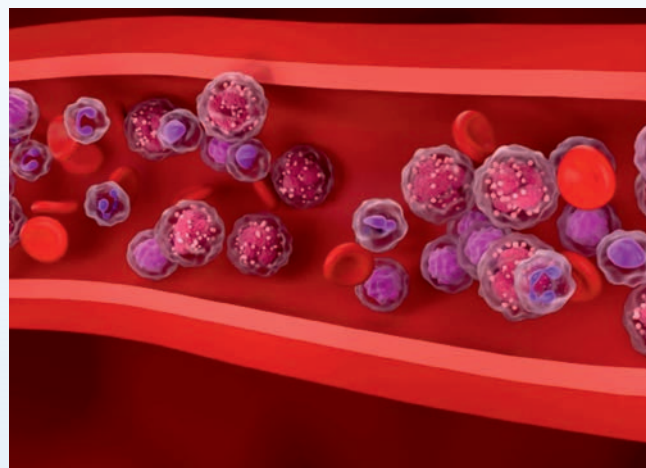
A patient was admitted to PSG Hospitals with persistent fever and pain over the thigh and shoulder regions, raising concerns of post-surgical complications due to an old orthopedic history. Initial investigations revealed localized fluid collection near a previously operated site, prompting a thorough orthopedic evaluation. While infection was considered, further hematological studies revealed abnormal findings that led to a deeper exploration.

Advanced diagnostic workup, including peripheral smear and flow cytometry, confirmed the presence of Early T-cell Precursor Acute Lymphoblastic Leukemia (ETP-ALL) - a rare and aggressive variant

of blood cancer originating from immature T-cells. This unexpected discovery underscored the importance of PSG Hospitals' commitment to accurate diagnosis and interdisciplinary collaboration.

Comprehensive Care Approach:

Under the expert supervision of Dr. Shashi Ranjani, Assistant Professor, Department of Pediatric Hematology, Oncology, and Bone Marrow Transplantation (BMT), the patient received individualized care rooted in precision and compassion. Following detailed evaluation and counseling, chemotherapy was initiated following standardized treatment protocols. The care plan included corticosteroid-based chemotherapy, supportive therapy, and continuous monitoring to ensure both efficacy and safety.



During the course of therapy, the patient experienced steroid-induced hyperglycemia, which was effectively managed by the Endocrinology Department, led by Dr. Senthil Kumar. This proactive coordination ensured stable blood glucose control and prevention of metabolic complications. The treatment regimen also involved antibiotics, antifungal prophylaxis, pain management, and infection prevention measures, with vigilant monitoring of blood counts and organ functions.

Restoring Health and Hope:

With comprehensive medical supervision and supportive care, the patient showed steady improvement. The symptoms of infection resolved, and hematological parameters began to normalize. Once stable, the patient was discharged with a detailed home-care and follow-up plan, emphasizing medication adherence, infection prevention, and regular oncology reviews.

“This case reaffirms the strength of integrated care,” shared Dr. Shashi Ranjani. “When multiple specialties collaborate with a shared purpose, even rare and aggressive conditions like leukemia can be effectively managed. Our mission is not just to treat but to restore hope and empower patients to reclaim their lives.”

A Testament to PSG Hospitals' Multidisciplinary Excellence:

This success story illustrates PSG Hospitals' unwavering dedication to comprehensive, patient-centered care. The collaboration between Oncology, Orthopedics, Endocrinology, and Internal Medicine showcases the hospital's integrated approach - where precision medicine meets empathy.

By combining advanced diagnostics, expert intervention, and a compassionate healing environment, PSG Hospitals continues to set new benchmarks in cancer care. Each recovery reflects the institution's vision - to deliver quality healthcare with a human touch, where science, skill, and compassion come together to create lasting impact.



PSG Institute of Oncology

Comprehensive Cancer Care Centre

Milestone Achieved! 500 HPV Vaccinations Completed!

Can Prevent
YUVA SAKTHI
CANcer Prevent



Avail
the
Vaccine
Now!

 Monday to Saturday  8 AM – 5 PM  C - Block, PSG Institute of Oncology,

KMCCON 2025 COIMBATORE – Championing Kangaroo Mother Care Across India

The Eighth National Conference on Kangaroo Mother Care (KMCCON 2025), organized by the Kangaroo Mother Care Foundation of India and the Neonatology Association of Tamil Nadu, will be held at Coimbatore, Tamil Nadu, in September 2025. The event brings together neonatologists, pediatricians, nurses, policymakers, and global experts, reaffirming India's leadership in the promotion and implementation of Kangaroo Mother Care (KMC) - a simple, evidence-based intervention that transforms newborn survival and wellbeing.



Training of Trainers – Building the Foundation:

The pre-conference event, the KMC Training of Trainers (TOT), will take place on 11th and 12th September 2025 at PSG Institute of Medical Sciences and Research. Coordinated by Dr. S. N. Vani and Dr. Deepa Banker, the two-day workshop aims to equip participants with practical and teaching skills in KMC implementation. The sessions will include hands-on demonstrations, group assignments, and discussions on KMC basics, nutrition, counselling, discharge planning, and facility-based improvements. The program emphasizes zero separation, nurturing care, and expanding KMC to new domains like cesarean-delivered infants, transport, and private practice.



Conference Highlights:

The main conference, scheduled for 13th and 14th September 2025, will feature an inaugural session graced by dignitaries including Dr. A. Arun Thamburaj, I.A.S., Mission Director, NHM Tamil Nadu, and renowned international experts such as Dr. Nathalie Charpak (Colombia), Dr. Nils Bergman (Sweden), and Dr. Kim Chi Luong (Vietnam). Sessions will spotlight the theme: "KMC – The Game Changer of Newborn Care in India." Keynote presentations will explore KMC's impact on neurodevelopment, zero separation, and breastfeeding support for preterm babies. Interactive discussions, research paper presentations, and debates will encourage cross-learning between states and institutions.



Expanding Horizons:

KMCCON 2025 will showcase India's collective progress in integrating KMC into public health systems through partnerships with the Ministry of Health and Family Welfare (MOHFW), WHO, UNICEF, ICMR, and various NGOs. State-level experiences from Tamil Nadu, Madhya Pradesh, Punjab, and Jammu will highlight innovations and challenges in implementation. The conference also celebrates the efforts of communities and CSR initiatives that are taking KMC beyond hospital walls and into homes.

As KMCCON 2025 unfolds in Coimbatore, it stands as a platform of collaboration, compassion, and commitment - a movement ensuring that every newborn in India receives warmth, care, and a healthy start through Kangaroo Mother Care.

SUCCESSFUL MANAGEMENT OF DECOMPENSATED CHRONIC LIVER DISEASE AT PSG HOSPITALS



Dr. R.K. Karthikeyan
Department of Gastroenterology

At PSG Hospitals, every recovery story reflects our commitment to excellence, innovation, and compassionate medical care. The Department of Gastroenterology recently managed a complex case of Decompensated Chronic Liver Disease (Ethanol-related Cirrhosis with Portal Hypertension) — an inspiring example of multidisciplinary teamwork and timely intervention that restored health and hope.

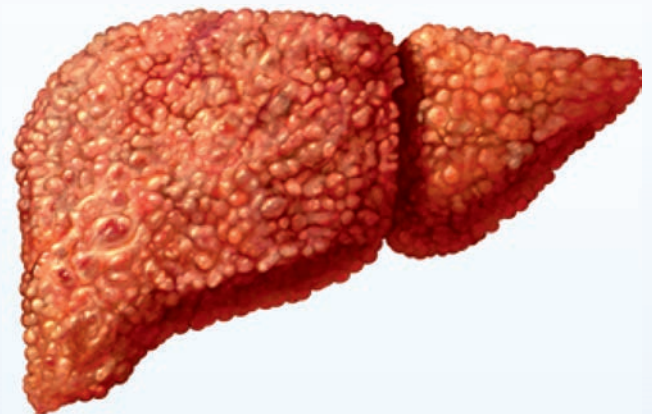
The Challenge:

A middle-aged man arrived at PSG IMSR & Hospitals, Coimbatore, with severe jaundice, abdominal distension, and loss of appetite. His clinical history revealed long-term alcohol consumption and symptoms indicative of advanced liver dysfunction. Prompt admission and evaluation under the Department of Gastroenterology ensured a structured and evidence-based management approach.

Diagnostic investigations including Liver Function Tests, Ascitic Fluid Analysis, and Upper GI Endoscopy confirmed features of liver cirrhosis, portal hypertensive gastropathy, and moderate ascites. The case demanded close monitoring and coordinated care across multiple specialties.

The Multidisciplinary Approach:

Under the expert care of Dr. R. K. Karthikeyan, Associate Professor, Department of Gastroenterology, the patient underwent a comprehensive treatment protocol designed to stabilize liver function and prevent complications. The medical team implemented an intensive management plan that included IV fluids, antibiotics, diuretics, albumin infusions, and hepatic protective therapy, along with anti-coma measures and nutritional support tailored to the patient's metabolic needs.

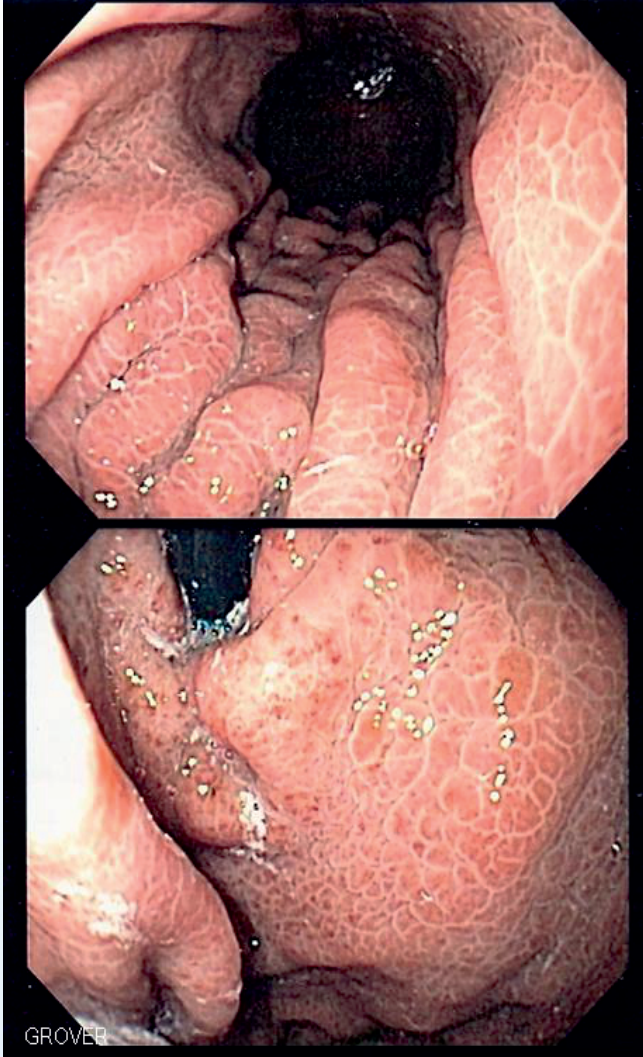


Collaboration among the departments of Gastroenterology, Critical Care, Nutrition, and Nursing ensured 24/7 observation and dynamic response to every change in the patient's condition. Each stage of recovery reflected the precision, vigilance, and empathy that define PSG Hospitals' approach to complex medical cases.

The Road to Recovery:

With timely intervention and continuous medical supervision, the patient showed marked clinical improvement - liver parameters stabilized, ascites reduced, and appetite gradually returned. The care team provided detailed counseling on lifestyle modification, emphasizing strict alcohol abstinence, salt restriction, and a high-protein diet to maintain optimal liver function.

Upon discharge, the patient was scheduled for regular follow-ups at the Gastroenterology OPD for ongoing assessment and preventive care. The recovery highlighted how personalized management and patient education can significantly improve outcomes in chronic liver disease.



A Testament to Expertise and Compassion:

This case exemplifies PSG Hospitals' mission of combining advanced medical expertise with patient-centered care. From diagnostics to rehabilitation, every department played a vital role in ensuring recovery and long-term wellness.

The Department of Gastroenterology at PSG Hospitals continues to set benchmarks in

hepatology and digestive health, offering advanced facilities, experienced specialists, and a compassionate healing environment for patients with liver disorders.

Through dedication, teamwork, and innovation, PSG Hospitals remains committed to restoring health and rebuilding lives - one success story at a time.

- Department of Gastroenterology, PSG Hospitals.



**MEDICINES
@
YOUR DOORSTEP**

**மருந்து, மாத்திரைகள்
டோர் டெலிவரி மற்றும்
கூறியர் மூலமாக
அனுப்பும் வசதி**

Contact :

82203 33747

MANAGING CHRONIC GERD WITH PRECISION: A Case from PSG Department of Gastroenterology



Dr. S. Mukundan
Department of Gastroenterology

At PSG Hospitals, comprehensive diagnosis and patient-centric management form the foundation of our medical excellence. A recent case from the Department of Gastroenterology exemplifies how advanced diagnostic tools and clinical expertise can bring lasting relief to individuals struggling with chronic gastroesophageal reflux disease (GERD).

A Complex Case of Persistent Reflux:

A young adult visited PSG Hospitals with persistent heartburn and acid reflux that had been troubling him for more than a year. Despite multiple courses of medications, including proton pump inhibitors (PPIs) and antacids, his symptoms kept recurring, affecting his comfort and quality of life.

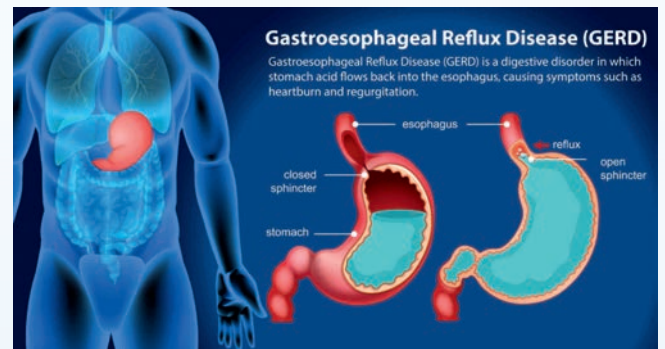
Previous investigations elsewhere revealed the presence of a small hiatus hernia, but the reflux episodes had worsened over time. Seeking a more precise diagnosis, he was referred to PSG Hospitals for advanced evaluation.

Accurate Diagnosis through Advanced Evaluation:

Under the supervision of Dr. Mukundan Swaminathan, Associate Professor, Department of Gastroenterology, a comprehensive diagnostic workup was conducted using cutting-edge modalities such as 24-hour pH monitoring and esophageal manometry.

The results provided valuable clarity. The esophageal manometry revealed a distal esophageal spasm, while the 24-hour pH and impedance studies identified predominant non-acid reflux in the upright posture, confirming a diagnosis of Gastroesophageal Reflux Disease (GERD). Importantly, the evaluation ruled out significant acid reflux based on a DeMeester score of 10.3.

These findings helped the medical team design a personalized treatment plan, shifting from generic therapy to a targeted approach based on accurate physiological data - a reflection of PSG Hospitals' emphasis on precision medicine.

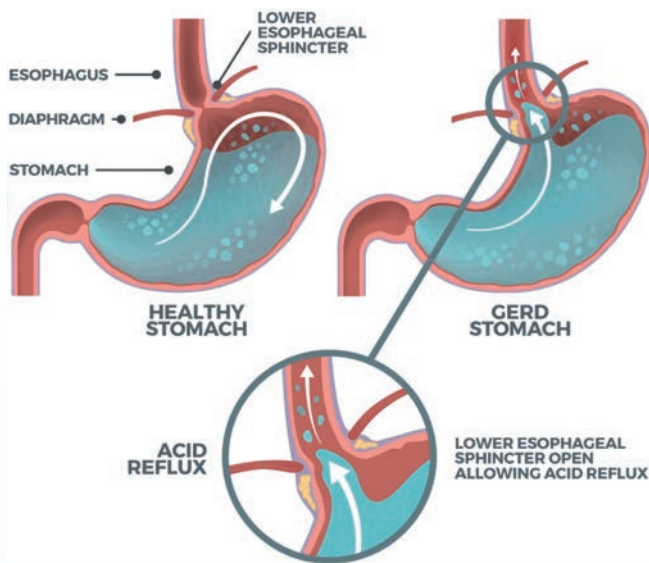


Comprehensive Management and Follow-Up:

With the diagnostic clarity established, the care team adopted a holistic management plan combining medication, lifestyle modification, and dietary counseling. The patient was advised on a GERD-specific diet, avoiding caffeine, citrus fruits, chocolate, and other reflux-triggering foods. He was also guided on postural adjustments, smaller frequent meals, and stress management.

A short course of medication was prescribed to control reflux episodes, with regular follow-up scheduled to monitor improvement and consider surgical options if symptoms persisted.

"Our focus is on identifying the exact cause of reflux and offering individualized treatment - integrating diagnostics, medication, and lifestyle therapy for lasting relief," shared Dr. Mukundan Swaminathan.



Precision Gastroenterology at PSG Hospitals:

This case underscores PSG Hospitals' strength in precision gastroenterology, where technology and expertise converge to deliver evidence-based care. By leveraging advanced diagnostic tools, the Department of Gastroenterology ensures that each patient receives tailored treatment backed by accurate data and multidisciplinary insights.

At PSG Hospitals, every success story is a step toward redefining digestive healthcare - with a focus on accuracy, compassion, and long-term wellness.

- Department of Gastroenterology, PSG Hospital.



Know your heart in a blink...



Coronary CT Angiogram
is a very good screening
technique for evaluation
of Coronary Arteries

Dedicated to Preventive Heart Health

- Low Radiation Dose
- Accuracy in Diagnosis
- Fast Scan - Coronary CT Angio in 3 minutes

PSG HOSPITALS

Super Speciality

UNTOLD TALES OF TRAUMA, TRIBULATION, AND TRIUMPH



Dr. D. Jayaprakash

Department of Neurosurgery

In the early hours of December 13, 2024, a 43-year-old man with no prior medical history was rushed to PSG Hospitals after a major road traffic accident. What began as a traumatic brain injury evolved into a 24-week journey filled with rare complications, multidisciplinary teamwork, and an extraordinary comeback.

The Battle Begins:

Upon arrival, his condition was critical - severe skull fractures, brain swelling, and loss of consciousness. The Neurosurgery team immediately performed an emergency decompressive craniectomy and hematoma evacuation to relieve pressure on the brain.

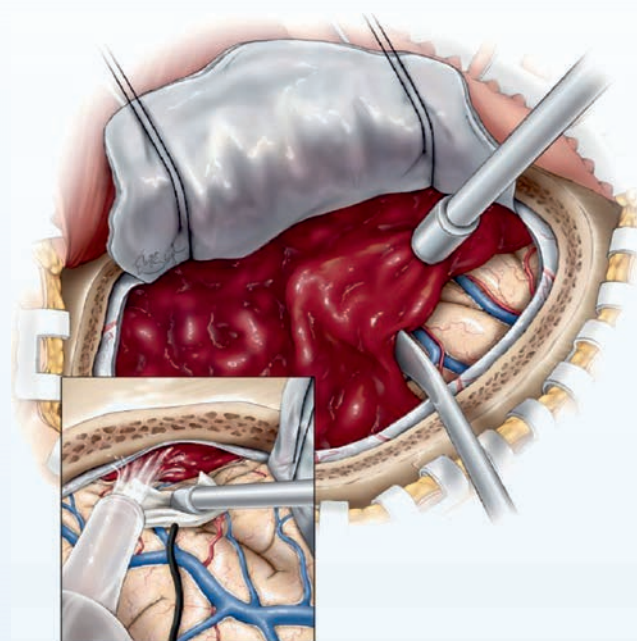
Even after surgery, the challenges intensified. Within days, he developed septic shock and multi-organ dysfunction, requiring advanced life support, ventilator care, and continuous monitoring. Teams from Critical Care, Nephrology, Endocrinology, Gastroenterology, and Infectious Diseases worked hand-in-hand to stabilize his condition. Despite multiple setbacks, the team's determination remained unwavering.

Complex Challenges, Tireless Efforts:

After the initial surgery, the patient developed a rare condition called Syndrome of Trephined, which

required a delicate cranioplasty to restore brain function despite infection risks. Later, new complications emerged - neurogenic fever and post-traumatic Parkinsonism - conditions seldom seen together. Each was handled with meticulous care and precision, using targeted medications and close supervision by the medical team.

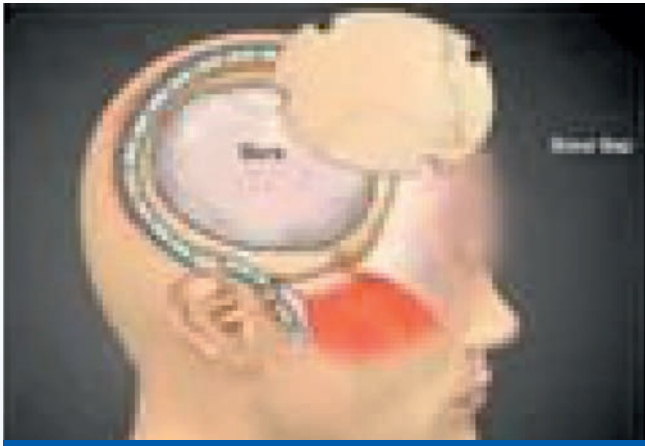
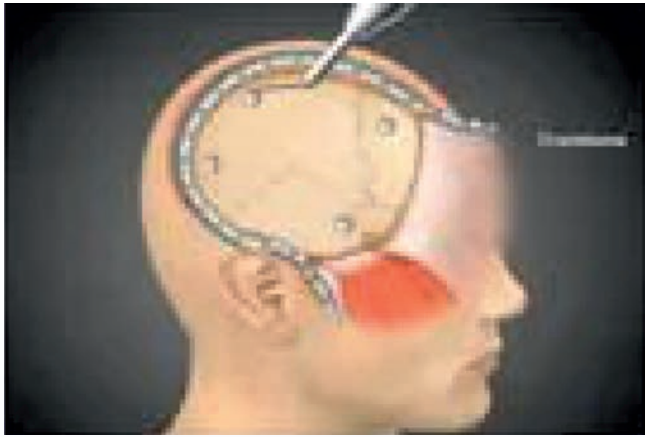
Prolonged ICU care led to severe spasticity and limb contractures, demanding months of physiotherapy, speech therapy, and occupational therapy. Every small milestone - a movement, a blink, or a word - was celebrated as a victory of persistence and coordinated rehabilitation.



The Road to Recovery:

Music therapy, emotional engagement, and family interaction played vital roles in reawakening his cognitive functions. The concept of neuroplasticity - the brain's remarkable ability to heal and rewire itself - was evident throughout his recovery. Gradually, memory, movement, and awareness returned, bringing hope to both his family and the medical team.

After nearly five months of hospitalization, multiple procedures, and dedicated rehabilitation, he achieved full consciousness, regaining the ability to walk, talk, and eat independently.



A Triumph of Teamwork and Tenacity:

This recovery stands as a shining example of PSG Hospitals' commitment to holistic, coordinated medical care. From emergency responders and neurosurgeons to critical care nurses and rehabilitation specialists, every department worked in unison to transform a near-fatal trauma into a story of triumph.

As he left PSG Hospitals, he carried not just the marks of survival, but the strength, skill, and compassion of the entire healthcare team behind him.

Retrograde amnesia - a blessing in disguise. Trauma forgotten, life renewed.

Our heartfelt gratitude to the teams from Neurosurgery, Critical Care, Nephrology, Gastroenterology, Endocrinology, Respiratory Medicine, Nursing, and Physiotherapy for their relentless dedication and compassionate care.

- Department of Neurosurgery, PSG Hospitals.



PSG HOSPITALS Super Speciality

Cordially invites you to the celebration of

36th HOSPITALS DAY

on 15th November, 2025, Saturday 05:00 pm at PSG IMS&R Auditorium

Chief Guest

Dr. T.G. RAMAMOORTHY

Senior Consultant, ENT Surgeon

Dr. S. THANGAVELU

Senior Consultant, Physician

COMPREHENSIVE EMPEROR HEALTH CHECK-UP PACKAGES at PSG Hospitals

Your Heart and Health Deserve the Best Care:

PSG Hospitals, Coimbatore, introduces the Emperor Health Check-Up Packages, designed to provide a complete and advanced evaluation of your overall health. These specialized packages combine cutting-edge diagnostic tests with expert medical consultations - ensuring early detection, accurate diagnosis, and preventive care for long-term wellness.

Emperor Health Check-Up – II (Cardio):

Tailored for individuals seeking detailed cardiac evaluation, this package includes more than 42 essential tests, covering all aspects of heart health and associated systems. From advanced cardiac markers to imaging and counselling sessions, every component is curated for accurate assessment and prevention of heart-related conditions.

Highlights include:

- ✓ CT Cardiac Angiography, ECHO, ECG, and Chest X-Ray
- ✓ Complete Blood Count, Liver & Thyroid Function Tests
- ✓ Lipid Profile, Vitamin D, and Homocysteine
- ✓ Panchakosha & Diet Counselling, along with multiple specialist consultations
- ✓ Package Cost: 35,000
- ✓ Emperor Health Check-Up – I (Cancer)

This comprehensive package focuses on early cancer screening and risk evaluation through more than 41 specialized tests. Designed for both men and women, it covers essential tumor markers, imaging, and expert counselling sessions to ensure timely detection and better treatment outcomes.

Highlights include:

- ✓ PET-CT Whole Body Screening and DEXA Scan

- ✓ Cancer markers including CA 125, CA 19-9, PSA, and CEA
- ✓ Complete Blood Workup, Thyroid & Liver Function Tests
- ✓ Specialist consultations in Oncology, Dietetics, and Ophthalmology
- ✓ Package Cost: 33,000
- ✓ Additional Benefits

Following the physician's consultation, vaccinations such as Influvac Tetra, Pneumosil 10, and Shingrix injections, as well as a Sleep Study, may be suggested if deemed necessary to enhance your preventive health care.

For Appointments:

Call: 0422 - 434 5270
434 5353

WhatsApp: +91 - 96006 66875

At PSG Hospitals, your health is our highest priority. With the Emperor Health Check-Up packages, take the proactive step towards a healthier, stronger, and more secure future.

**EMPEROR HEALTH CHECKUP for
Cancer and Cardio for More Details,
Scan this QR code**

Package-1

for CANCER



₹33,000/-
41+ Tests

Package-2

for CARDIO



₹35,000/-
42+ Tests

For Appointments: ☎ 0422 - 4345270 / 4345353
📞 +91 - 96006 66875

FREE BREAST CANCER SCREENING FOR WOMEN Powered by Thermalytix Technology

Early Detection Saves Lives!

PSG Institute of Oncology offers FREE breast cancer screening using Thermalytix - an advanced, AI-based, radiation-free screening technology.

This innovative method ensures:

- ✓ No radiation
- ✓ No contact or compression
- ✓ Completely safe and painless
- ✓ Accurate detection even in dense breasts
- ✓ Suitable for women of all age groups

About Thermalytix:

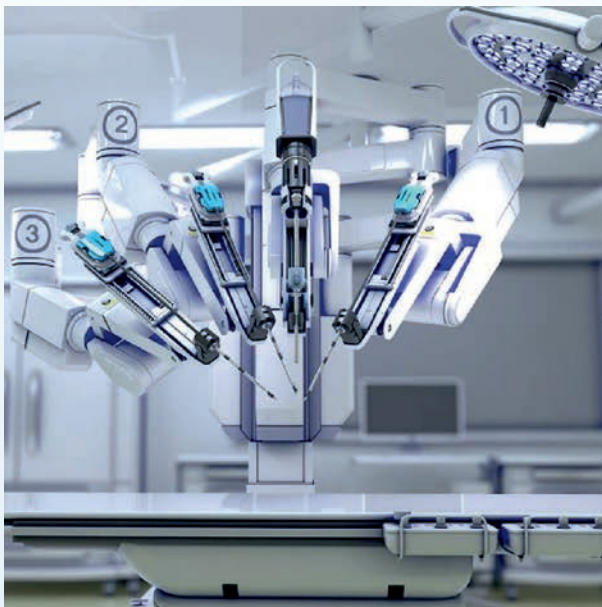
Thermalytix is a breakthrough AI-powered thermal imaging technology that detects minute temperature variations in breast tissue to identify early signs of cancer - often before visible symptoms appear.

For Appointments:

PSG Institute of Oncology, PSG Hospitals,
Coimbatore

Call: 0422 - 434 8000
434 8005

WhatsApp: +91 - 82200 13330



PSG HOSPITALS



Sets Standards in

ROBOTIC SURGERY

Highest number of

Robotic Surgeries

in the region

Congratulations

to our Robotic Surgery Team for redefining what's possible



PSG Hospitals

Peelamedu, Coimbatore - 641 004,
Tamil Nadu, India. www.psghospitals.com

Care Built on Trust and Expertise