



## CHIEF PATRON

Shri. L. Gopalakrishnan

Managing Trustee PSG & SONS' Charities

## PATRONS

Dr. J.S.Bhuvaneswaran

Dr. T.M.Subba Rao

## Editorial Board:

Dr. Vimal Kumar Govindan

Dr. Pavai Ganesan

Dr. Varunn

✉ [psgmedipulse@psgimsr.ac.in](mailto:psgmedipulse@psgimsr.ac.in)

🌐 [www.psghospitals.com](http://www.psghospitals.com)

☎ +91 82200 13330

*Introducing*  
**COIMBATORE'S  
FIRST  
Advanced  
REGENERATIVE  
THERAPY**  
*at  
PSG Hospitals*

## PSG HOSPITALS – PEDIATRIC EVENING CLINIC: Comprehensive Child Care from Newborn to Adolescence

PSG Hospitals proudly introduces the Pediatric Evening Clinic, designed to provide convenient, accessible, and high-quality healthcare for children during evening hours. Understanding the busy schedules of working parents, our clinic ensures trusted pediatric care without compromising your time, comfort, or your child's wellbeing.

Our Pediatric Evening Clinic is managed by experienced pediatric specialists dedicated to offering personalised care for every child - from newborns to teenagers. With a child-friendly environment, advanced medical support, and compassionate guidance, we ensure every visit is smooth, safe, and reassuring for both children and parents.

### Our Services Include:

- **General Pediatric Consultations:** Expert evaluation and treatment for common childhood illnesses, behavioural concerns, and developmental needs.
- **Vaccinations & Growth Monitoring:** Complete immunisation services and regular growth assessments to ensure healthy development.
- **Newborn & Infant Care:** Specialised care for feeding issues, sleep patterns, and early developmental milestones.
- **Allergy, Asthma & Infection Management:** Systematic evaluation, prevention, and treatment of recurrent allergies, breathing issues, and infections.
- **Adolescent Health Support & Parental Guidance:** Focused care addressing physical, emotional, and hormonal changes with supportive counselling for parents.

**Clinic Timings:**  
Monday to Saturday – 5 PM to 8 PM



### Why Choose PSG Hospitals?

- Trusted team of experienced pediatric specialists
- Safe, comfortable, and child-friendly environment
- Access to comprehensive laboratory, radiology, and emergency services
- Convenient timing for working parents
- Holistic care approach for children of all age groups



For Appointments and Enquiries:

**CONTACT: 82200 13330**

**PSG Hospitals - Caring for your child's health,  
every step of the way.**



## REWRITING MEN'S HEALTH: Coimbatore's First Regenerative Therapy Now at PSG Hospitals



**Dr. KRISHNAMOHAN**

Department of Urology

### Pioneering Men's Health Innovation with Evidence-Based Regenerative Medicine:

PSG Hospitals, Coimbatore, proudly announces a groundbreaking milestone—we are the **FIRST** hospital in Coimbatore to introduce Advanced Regenerative Therapy under our renowned Aanmai Clinic and Andrology Department. This achievement places PSG Hospitals at the forefront of men's health innovation in the region, reaffirming our leadership in bringing cutting-edge medical advancements to the community.

This initiative reflects PSG Hospitals' unwavering mission to integrate modern scientific breakthroughs with clinical excellence, ultimately delivering state-of-the-art care that is minimally invasive, highly effective, and focused on long-term well-being.

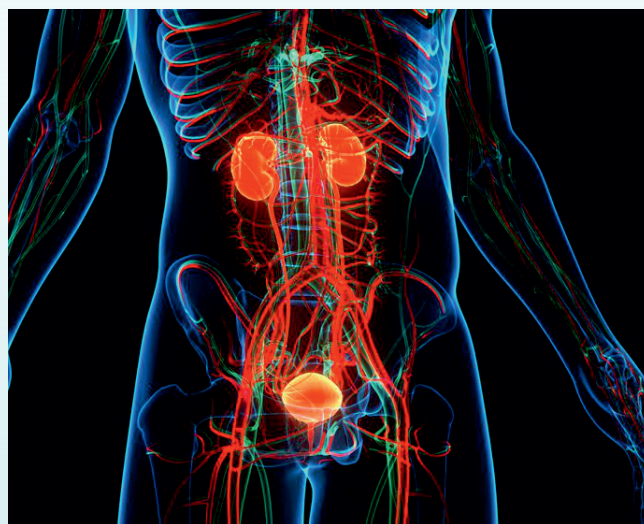
### A First-of-Its-Kind Service in Coimbatore:

Being the first hospital in Coimbatore to establish a dedicated Regenerative Therapy unit, PSG Hospitals sets a new benchmark in diagnosis, treatment, and rehabilitation for men's reproductive and sexual health. Regenerative medicine represents the future of clinical care, and PSG Hospitals is proud to bring this future to Coimbatore today.

The new unit features the latest, globally recognized regenerative modalities designed to restore function, rebuild tissue health, and improve overall male wellness through scientifically proven techniques.

### Key Advanced Therapies Offered:

- **Platelet-Rich Plasma (PRP) Therapy:**  
Enhances tissue regeneration and blood flow using the patient's own growth factors.
- **Low-Intensity Extra-Corporeal Shock Wave Therapy (LiESWT):**  
A non-invasive, first-line treatment for erectile dysfunction and chronic pelvic pain that promotes natural healing and vascular regeneration.



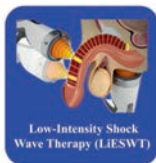
- **High-Intensity Focused Electromagnetic Therapy (HIFEM):**  
Strengthens pelvic floor muscles, improves ejaculatory and erectile function, and supports long-term sexual wellness.

These therapies offer promising outcomes for men experiencing erectile dysfunction, ejaculatory disorders, chronic pelvic issues, pelvic floor weakness, and age-related sexual health concerns.

## Redefining Andrology Care with Expert Leadership:

Senior Consultant and Clinical Lead of Andrology, Dr. Krishna Mohan B, emphasized that the launch of this FIRST - in Coimbatore service marks a major leap toward personalized, minimally invasive, and technology-driven men's health care.

The Aanmai Clinic has long been a center of excellence for male infertility, hormone management, prostate health, and sexual wellness. The integration of regenerative medicine elevates this reputation further, ensuring every patient receives holistic, evidence-based, and individualized treatment under one roof.



## A Regional Leader in Advanced Men's Health:

With this new launch, PSG Hospitals strengthens its position as the regional leader in the Kongu belt for:

Male infertility evaluation & treatment

Sexual dysfunction management

Prostate and hormone health

Pelvic floor rehabilitation

Men's wellness & preventive care

The addition of Coimbatore's first Regenerative Therapy services reinforces PSG Hospitals' commitment to innovation, precision, and patient-centered healthcare.



## Shaping the Future of Men's Wellness:

PSG Hospitals continues to invest in pioneering therapies, research - driven care, and the highest standards of medical excellence. By becoming the first hospital in Coimbatore to introduce Regenerative Therapy, we reinforce our dedication to offering treatments that are safer, more effective, and aligned with the global advancements in reproductive and sexual health.

This milestone ensures that men across Coimbatore and adjoining districts can now access world-class regenerative medical care locally - without the need to travel to metro cities or specialty centers.

## For Appointments & Enquiries:

### AANMAI CLINIC

PSG Hospitals, Peelamedu, Coimbatore

Coimbatore's First Regenerative Therapy Centre  
for Men's Health

Advanced Andrology Sexual Wellness  
Reproductive Health

**EMPEROR HEALTH CHECKUP for  
Cancer and Cardio for More Details,  
Scan this QR code**

### Package-1

**for CANCER**



**₹33,000/-**

**41+ Tests**

### Package-2

**for CARDIO**



**₹35,000/-**

**42+ Tests**

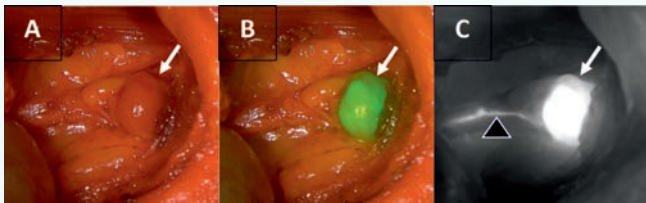
For Appointments:

**0422 - 4345270 / 4345353**  
**+91 - 96006 66875**



## **PUSHING THE BOUNDARIES OF ENDOCRINE SURGERY: Advancing Endocrine Surgery with State-of-the-Art 4K HD Laparoscopic Imaging**

PSG Hospitals continues to strengthen its reputation as a leader in advanced minimally invasive endocrine surgery. In recent months, the surgical team has successfully performed a series of complex endoscopic parathyroidectomy procedures, marking a significant milestone in the delivery of high-precision, patient-centered care. With state - of - the - art imaging platforms, fluorescence-guided localization, and real-time biochemical monitoring, PSG Hospitals is redefining standards in the diagnosis and treatment of parathyroid disorders.

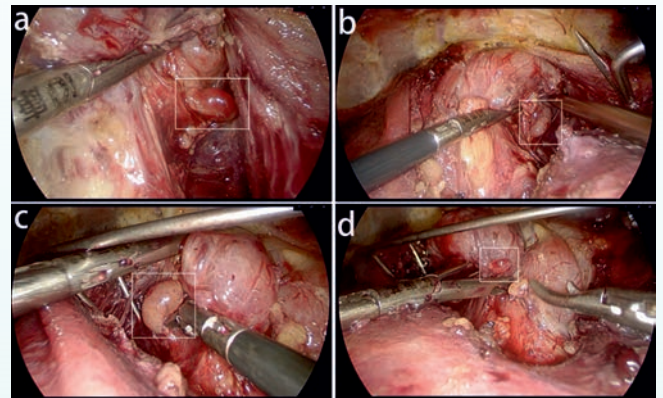


Parathyroid surgery demands meticulous precision due to the small size of the glands and their proximity to critical structures. Traditionally, identifying hyperfunctioning parathyroid tissue was considered one of the greatest challenges in endocrine surgery. However, the incorporation of next-generation 4K HD laparoscopic imaging at PSG Hospitals has transformed the surgical landscape.

This ultra-high-definition visualization system offers unparalleled clarity, providing surgeons with magnified, accurate views of key anatomical landmarks. The finer details revealed by 4K imagery significantly enhance dissection accuracy, reduce intra-operative risks, and help preserve healthy structures while targeting the pathological gland.

A major highlight of PSG Hospitals' advancement is the adoption of Indocyanine Green (ICG) fluorescence technology for intra-operative guidance. This cutting-edge imaging modality allows surgeons to instantly visualize vascular patterns

and precisely locate hyperfunctioning parathyroid tissue. The technique is particularly valuable in cases of anatomical variation, deep-seated glands, or revision surgeries. The use of ICG eliminates uncertainty, improves localization accuracy, and contributes to shorter operative times - directly translating into better patient outcomes.

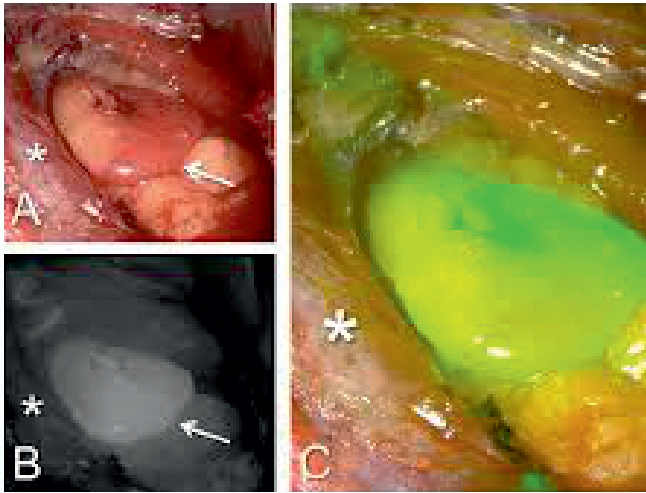


Complementing these imaging innovations is the use of intra-operative parathyroid hormone (PTH) monitoring, a gold-standard tool for confirming surgical success. By monitoring PTH levels during the procedure, surgeons can validate complete removal of the hyperactive gland with immediate biochemical feedback. This real-time assessment minimizes the risk of persistent hyperparathyroidism and ensures patients experience rapid normalization of calcium levels after surgery.

The combined use of 4K imaging, fluorescence guidance, and real-time PTH monitoring represents a holistic and modern approach to endocrine surgery - one that aligns with global best practices.

**These advancements provide patients with several key benefits:**

- Smaller incisions and reduced scarring
- Less postoperative pain



- Shorter hospital stay
- Faster return to daily activities
- Lower complication rates
- Consistently high success outcomes

At PSG Hospitals, each surgical innovation is rooted in a commitment to excellence, safety, and compassionate care. The surgical team's growing expertise in advanced minimally invasive techniques ensures that even complex cases are managed with confidence and precision. The rapid completion of multiple successful endoscopic parathyroidectomy procedures stands as a testament to the hospital's clinical expertise, technological strength, and dedication to offering world-class healthcare to the community.

As PSG Hospitals continues to adopt and refine transformative surgical technologies, patients can trust that they are receiving care that meets - and often exceeds - international standards. The future of endocrine surgery is evolving, and PSG Hospitals is proud to be at the forefront of this evolution, delivering surgical excellence with innovation, precision, and unparalleled patient outcomes.



99 YEARS IN NATION BUILDING

## PSG Hospitals SUPER SPECIALITY

1400+ Bedded Tertiary Care Hospital



P.B. No.1674, Peelamedu, Coimbatore 641004. Phone: 0422 2570170, 4345353.

Helpline & WhatsApp : 8220013330 | For Emergency : 7449 108 108 | Email : enquiry@psgimsr.ac.in Web : www.psghospitals.com

## WHERE ADVANCED HEALTHCARE TECHNOLOGY & HUMANITY MEET...

ONE POINT SOLUTION  
FOR ALL YOUR  
HEALTHCARE NEEDS

CARE BUILT ON TRUST & EXPERTISE



AFFORDABILITY | ETHICS | SCIENCE | QUALITY | PERSONAL CARE



## PSG HOSPITALS CELEBRATES ITS 36TH HOSPITALS DAY WITH PRIDE AND PURPOSE

PSG Hospitals, IMSR & Super Speciality, proudly celebrated its 36th Hospitals Day on 15th November 2025 at the PSG IMS&R Auditorium, marking yet another milestone in compassionate patient care, medical excellence, and community service. The event reflected PSG's century-long legacy of nation building and its continued commitment to healthcare innovation and education.

The celebration was graced by esteemed Chief Guests, Dr. T. G. Ramamoorthy, Senior Consultant & ENT Surgeon, and Dr. S. Thangavelu, Senior Consultant Physician, who added prestige and inspiration to the occasion with their presence.

The program commenced with a soulful Prayer Song by Dr. K. Bharadhwaj, Consultant – Medical Oncology, setting a dignified tone for the evening. This was followed by a warm Welcome Address delivered by Dr. J. S. Bhuvaneshwaran, Director of

Dr. T. G. Ramamoorthy and Dr. S. Thangavelu, recognized the contributions of key members and departments who have upheld the highest standards of excellence at PSG Hospitals.

This was followed by the much-awaited Award Distribution, presented by Shri L. Gopalakrishnan, Managing Trustee, PSG & Sons' Charities. The awards celebrated the hard work, commitment, and outstanding service of doctors, nurses, technicians, administrative staff, and support teams - who together form the backbone of PSG's trusted healthcare system.

The event concluded with a gracious Vote of Thanks by Dr. R. Karthikeyan, Medical Director – PSG IMSR & Hospitals, acknowledging the dedicated efforts of all participants in making Hospitals Day a memorable success.



PSG Super Speciality Hospitals, highlighting the institution's achievements and future vision.

The Presidential Address was delivered by Shri G. R. Karthikeyan, Chairman, PSG & Sons' Charities. His message emphasized PSG's continued dedication to serving society with advanced healthcare facilities, skilled professionals, and compassionate service.

A special highlight of the event was the Felicitation Ceremony, where the Guests of Honour,

The celebration closed on a joyous note with entertainment programs and dinner, bringing together the PSG family in camaraderie and celebration.

PSG Hospitals' 36th Hospitals Day stands as a testament to its unwavering mission - delivering quality healthcare, fostering medical education, and continuing to serve the community with excellence.

## PSG HOSPITALS: Trusted Excellence in Paediatric Care



**Dr. JAYAWARDANA**  
Department of Pediatrics

### Advanced Evaluation, Compassionate Management, and Complete Child-Centred Care:

PSG Hospitals, Peelamedu, Coimbatore, stands as one of the region's most trusted healthcare institutions, delivering comprehensive and compassionate care across all specialties. Among these, the Department of Paediatrics continues to shine as a centre of excellence, equipped with experienced consultants, advanced diagnostic facilities, and a warm, family-friendly environment.

Recently, a young child presented to the Paediatrics Department with complaints of persistent giddiness, light-headedness, and occasional palpitations lasting for nearly ten days. Recognizing the importance of timely paediatric evaluation, our expert team admitted the child for a thorough, structured assessment to ensure an accurate diagnosis and appropriate management.

### Comprehensive Evaluation by Specialists:

At PSG Hospitals, each paediatric case is handled with meticulous attention to detail. The child underwent a complete evaluation under the supervision of our experienced Paediatric Unit consultants. The medical team ensured a

systematic review of symptoms, developmental history, family history, past health events, and complete physical examination.

### Key clinical findings included:

- Normal alertness, activity, and hydration
- Stable vital signs
- No signs of neurological or cardiovascular distress
- Normal anthropometric measurements for age
- No postural drop in blood pressure
- No red-flag symptoms such as loss of consciousness or seizure-like activity

Through structured observation and analysis, a provisional diagnosis of vasovagal syncope was made - a common but occasionally concerning condition in children, triggered by dehydration, prolonged standing, or sudden postural changes.

### State - of - the - Art Diagnostics:

To ensure complete clarity and rule out any underlying cardiac issues, PSG Hospitals conducted a series of investigations:

- ECG, which revealed sinus bradycardia
- Echocardiography, reported as normal
- 72 - hour Holter Monitoring, initiated for continuous heart rhythm assessment

This level of diagnostic precision reflects PSG Hospitals' commitment to providing safe, evidence-based paediatric care.

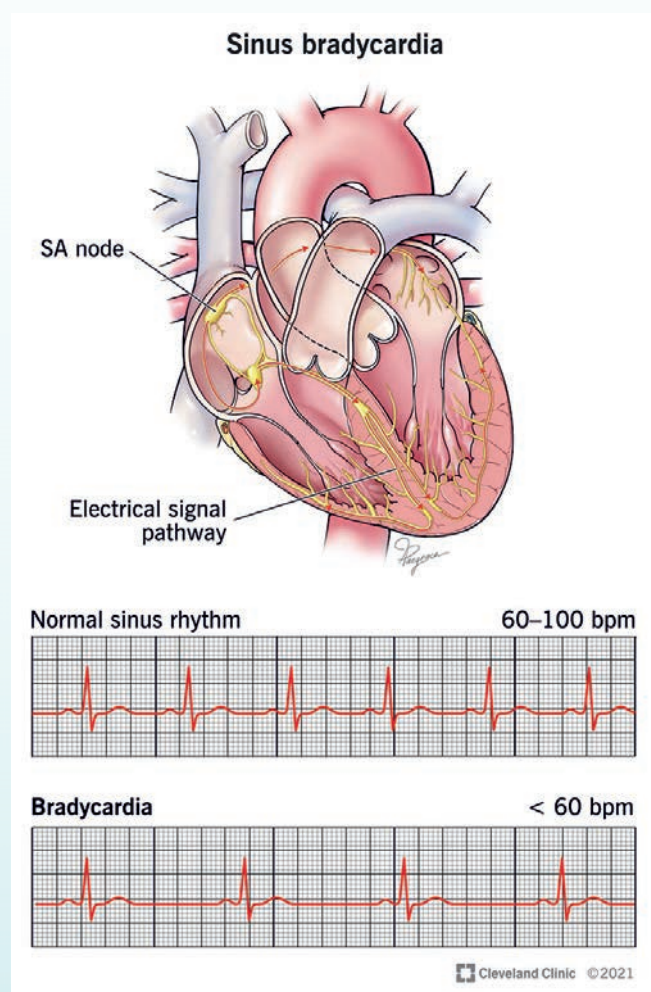
### Collaborative Specialist Consultation:

In keeping with our multidisciplinary care model, the case was also reviewed by a Pediatric Cardiologist. The collaborative approach ensures



that every aspect of the child's health is interpreted correctly, enabling accurate diagnosis and preventing unnecessary interventions.

The child remained stable during the hospital stay, with no further episodes of giddiness or syncope, and was subsequently discharged with advice on lifestyle modifications and scheduled follow-up appointments.



#### A Family - Centred, Child - Friendly Approach:

PSG Hospitals prioritizes comfort, communication, and reassurance - especially when caring for children. Parents were counselled thoroughly regarding:

- The nature of vasovagal syncope
- Warning signs to watch for

- Preventive strategies such as avoiding prolonged standing and excessive physical exertion
- The importance of hydration and regular follow-ups

This transparent and empathetic approach makes PSG Hospitals a trusted choice for thousands of families across Tamil Nadu.

#### Why PSG Hospitals Leads in Paediatric Healthcare?

- ❑ Expert team of Paediatricians supported by specialists in paediatric cardiology, neurology, and emergency care
- ❑ Round-the-clock monitoring and child-friendly wards
- ❑ Advanced diagnostics including ECG, Echo, Holter Monitoring, and laboratory services
- ❑ Multidisciplinary, evidence-based clinical decision-making
- ❑ Holistic care that includes physical, emotional, and developmental well-being

#### PSG Hospitals – Caring for Children with Expertise and Heart:

From accurate diagnosis to caring guidance and community - based support, PSG Hospitals continues to set the benchmark for paediatric healthcare. With a blend of modern infrastructure, skilled clinicians, and genuine compassion, we ensure every child receives the safest and most reliable care possible.



## PSG HOSPITALS: Excellence in Gastroenterology Care



**Dr. L. VENKATAKRISHNAN**  
Head of the Department of  
Gastroenterology

### Advanced Diagnosis, Compassionate Treatment, and Trusted Expertise

The Department of Gastroenterology at PSG Hospitals, Peelamedu, Coimbatore, is widely recognized as a centre of excellence for digestive health. Our department combines clinical expertise, advanced diagnostic technologies, and a patient-first approach to deliver world-class care for a wide spectrum of gastrointestinal disorders.

Recently, a young adult patient with long-standing symptoms of gastroesophageal reflux (GERD) was admitted for further evaluation after experiencing persistent heartburn and discomfort for nearly two years. Previous treatments had provided only partial relief, prompting the need for a deeper, more accurate diagnostic assessment at PSG Hospitals.

### Advanced Diagnostic Excellence:

At PSG Hospitals, every patient undergoes a comprehensive evaluation using sophisticated diagnostic tools. In this case, our specialists performed:

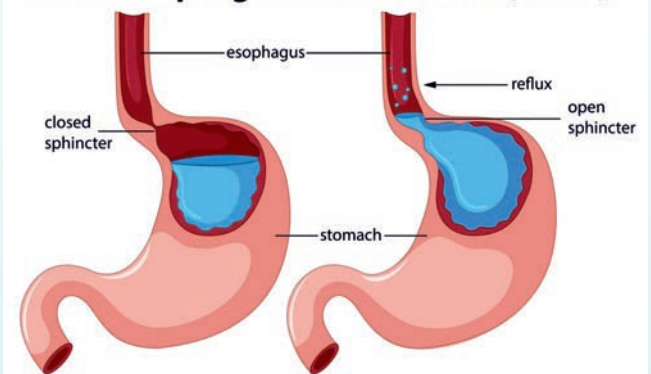
- ❑ High-Resolution Esophageal Manometry – to assess the muscular activity and function of the esophagus

- ❑ 24 - Hour pH Monitoring – to measure acid exposure in the esophagus
- ❑ 24 - Hour Impedance Study – to detect both acid and non-acid reflux patterns

These examinations revealed important findings related to esophageal motility and reflux behaviour. The results showed features of distal esophageal spasm along with frequent reflux episodes, especially in the upright posture. Despite adequate medical therapy in the past, the patient continued to experience symptoms, indicating the possibility of surgical evaluation for chronic GERD.

Such advanced and precise diagnostic assessments are what set PSG Hospitals apart in delivering accurate treatment for complex gastrointestinal issues.

### Gastroesophageal reflux disease (GERD)



### Expert Team of Gastro Specialists:

The Department of Gastroenterology at PSG Hospitals is led by an elite team of specialists, including:

- Professors and Associate Professors in Medical Gastroenterology
- Consultants in Surgical Gastroenterology & HPB (Liver, Pancreas, Biliary) Surgery
- Specialists in Bariatric & Metabolic Surgery
- Highly trained Senior Registrars and Residents



This multidisciplinary team ensures that patients receive the most advanced and holistic care for conditions such as GERD, acid-peptic diseases, swallowing disorders, liver diseases, inflammatory bowel disease, pancreatitis, gastrointestinal cancers, and more.

## A Truly Patient - Centric Approach:

At PSG Hospitals, patient comfort and clarity are paramount. From admission to discharge, every step is handled with care, transparency, and professionalism. Patients are counselled in detail regarding their diagnosis, procedures, dietary modifications, medication plans, and follow-up requirements.

The individual described above was discharged in stable condition with structured advice on GERD-specific diet, lifestyle modifications, and follow-up appointments to ensure long-term recovery and relief.

## Why Choose PSG Hospitals for Gastroenterology?

- ❑ Highly qualified specialists with years of expertise
- ❑ State-of-the-art diagnostic facilities
- ❑ Comprehensive medical and surgical gastro care
- ❑ Patient-focused evaluation and detailed follow-up
- ❑ Trusted reputation built over decades

PSG Hospitals, Coimbatore, continues to set new benchmarks in digestive health by combining innovation, expertise, and heartfelt care. For anyone experiencing persistent digestive symptoms, reflux issues, abdominal discomfort, or complex gastrointestinal conditions, our Gastroenterology Department remains a trusted destination for accurate diagnosis and effective treatment.

## Beyond Hospital Walls – Our Special Services:

PSG Hospitals ensures healthcare accessibility through a range of unique community-oriented services:

- **MITHRA** – Lab on Wheels
- **SANJAYA** – Online Doctor Consultation
- **SANJEEVANI** – Doorstep Medicine Delivery
- **SANTHAM** – Palliative Care Services
- **KAMADENU** – Mother's Milk Bank
- **VAIDHYA** – Home Health Services
- **VEGAM** – Emergency First Aid on Two-Wheeler (7449 108 108)

These services extend the hospital's commitment to uninterrupted care, convenience, and compassion.



# SANJEEVANI

## MEDICINES

@

## YOUR DOORSTEP

மருந்து, மாத் திரைகள் டோர் டெலிவரி  
மற்றும் கூரியர் மூலமாக அனுப்பும் வசதி

CONTACT:

# 82203 33747

## PSG HOSPITALS HOSTS INTERNATIONAL CONFERENCE ON ONCOLOGY NUTRITION 2025 : “From Bench to Bedside”

### Advancing Evidence-Based Cancer Nutrition for Better Patient Outcomes:

PSG Hospitals' Department of Dietetics successfully organized the International Conference on Oncology Nutrition 2025, themed “From Bench to Bedside”, bringing global attention to the growing significance of evidence-based nutrition in cancer care. The conference served as a powerful platform where leading experts, clinicians, dietitians, educators, and researchers came together to exchange cutting-edge scientific knowledge and translate advancements into practical clinical application.



Held under the esteemed patronage of **Shri L. Gopalakrishnan, Managing Trustee, PSG & Sons' Charities**, the conference witnessed the unwavering support of PSG's visionary leadership -

- **Dr. J. S. BHUVANESWARAN,**  
Director, PSG Superspeciality Hospitals.
- **Dr. T. BALAJI,**  
Director, PSG Institute of Oncology.
- **Dr. T. M. SUBBA RAO,**  
Principal, PSG IMSR & Hospitals.
- **Dr. R. KARTHIKEYAN,**  
Medical Director, PSG IMSR & Hospitals.
- **Dr. K. S. RAJKUMAR,**  
Medical Superintendent,  
PSG Institute of Oncology.

- **Dr. M. D. VARUNN,**  
Medical Superintendent,  
PSG Superspeciality Hospitals.

The event was spearheaded by Dr. V. Kavitha, Chief Dietitian, along with her dedicated team, whose meticulous planning ensured excellence in every segment of the conference.

### Pre-Conference Workshop: Skill Building for Clinical Excellence:

The academic festivities commenced on 5<sup>th</sup> December 2025 with an engaging pre-conference workshop titled “Nutrition Support in Clinical Settings – Feeding the Critically ILL”, held at the state-of-the-art Simulation Lab, PSG IMSR. The workshop provided participants with hands-on demonstrations, case-based learning, and practical training on delivering specialized nutritional support to critically ill patients - a cornerstone in modern critical care.



With over 70 enthusiastic delegates, the workshop laid a strong foundation, setting the tone for deeper learning during the conference.

### Scientific Sessions Packed with Global Expertise:

The main conference held on 6<sup>th</sup> December 2025 featured a rich blend of national and international speakers, highlighting the multi-dimensional role of nutrition across oncology, critical care, surgery, and rehabilitation.



## Forenoon Sessions: Integrating Science with Practice:

The morning began with insightful lectures by distinguished experts:

- **Dr. K. S. RAJKUMAR,**  
Surgical Oncologist & Medical Superintendent,  
PSG Institute of Oncology.
- **Dr. SHASHI RANJANI,**  
Paediatric Oncologist,  
PSG Institute of Oncology.
- **Dr. Shanthi Dhandapani,**  
IMU University, Malaysia.

This was followed by enriching presentations from:

- **Dr. LEKHA SREEDHARAN,**  
Head of Clinical Dietetics,  
Apollo Children's Hospital &  
National Vice President,  
IAPEN India.
- **Dr. MADHU SAIRAM,**  
Director of Academics & Lead Radiation  
Oncologist,  
GEM Cancer Center.
- **Dr. JYOTHI S. KRISHNAN,**  
Head of Clinical Nutrition & Dietetics,  
Believers Church Hospital,  
Thiruvalla.
- **Dr. ARVIND KRISHNAMURTHY,**  
Surgical Oncologist,  
Cancer Institute (WIA)  
Adyar.
- **Dr. V. KAVITHA,**  
Chief Dietitian,  
PSG Hospitals.

These sessions highlighted the crucial collaboration between nutrition and multidisciplinary cancer care to significantly improve patient outcomes.



## Afternoon Sessions: Global Insights & Multidisciplinary Perspectives:

The second half of the conference brought forth advanced discussions from renowned specialists:

- **Dr. K. BALU,**  
Surgical Gastroenterologist,  
PSG Hospitals.
- **Dr. HIMALADEV G. J.**  
Chief Consultant in Critical Care Medicine,  
Apollo Hospitals,  
Bangalore.
- **Dr. K. SUNITHA PREMALATHA,**  
Chief Dietitian & Assistant General Manager,  
Yashoda Hospitals,  
Hyderabad.
- **Ms. FEBI DHAS,**  
Speech Language Pathologist,  
PSG Hospitals.

A standout highlight of the event was the International Keynote Address by:

- **Dr. VANESSA FUCHS-TARLOVSKY,**  
Nutrition Support Practitioner & Researcher,  
Hospital General de México,  
Mexico City.

Her session offered exceptional insights into global research trends and evolving nutritional protocols in oncology.

## Panel Discussion & Closing – Bridging Research and Real-World Practice:

The conference concluded with an impactful multidisciplinary panel discussion titled “From Bench to Bedside – Translating Evidence into Practice”, moderated by Dr. K. Balu. The expert panel featuring Dr. Kavi Shankar, Dr. Anuja Panicker, Dr. Subhashini, Dr. V. Ramamoorthy, Mrs. Karthika and Mrs. Hemalatha explored real - world clinical challenges and the future of oncology nutrition in India.

All participants received Tamil Nadu Medical Council (TNMC) Credit Hours, emphasizing the academic value and professional relevance of the event.

## A Landmark Event in Advancing Cancer Nutrition:

PSG Oncology Nutrition 2025 stands as a milestone academic event that successfully merged scientific innovation with clinical implementation, perfectly embodying its theme, “From Bench to Bedside.” By bringing together nearly 200 delegates, including doctors, dietitians, researchers, and students, the event highlighted the growing recognition of nutrition as an integral component of comprehensive cancer care.

With this inspiring conference, PSG Hospitals continues its commitment to advancing medical education, strengthening clinical practice, and improving patient outcomes through evidence-based nutrition and visionary leadership.



# *Know your heart in a blink...*



**Coronary CT Angiogram**  
is a very good screening  
technique for evaluation  
of Coronary Arteries

**Dedicated to  
Preventive  
Heart Health**

- Low Radiation Dose
- Accuracy in Diagnosis
- Fast Scan - Coronary CT Angio in 3 minutes

**PSG HOSPITALS**  
Super Speciality

## REVOLUTIONIZING PARATHYROID SURGERY WITH ADVANCED ENDOSCOPIC TECHNIQUES AT PSG HOSPITALS



**Dr. S. RAJESH KUMAR**  
Department of General &  
Gastro Intestinal Surgery

PSG Hospitals continues to set new benchmarks in minimally invasive endocrine surgery with the successful completion of multiple advanced endoscopic parathyroidectomy procedures in a remarkably short period. Our surgical excellence, combined with cutting-edge technology, ensures safer procedures, faster recovery, and superior clinical outcomes for patients with parathyroid disorders.

At the heart of this achievement is the use of state-of-the-art 4K HD laparoscopic imaging, which provides exceptional visual clarity during dissection. The enhanced resolution allows surgeons to visualize delicate anatomical structures with remarkable precision, significantly improving the accuracy and safety of each procedure.

To further refine intra-operative decision-making, our team utilizes Indocyanine Green (ICG) fluorescence guidance. This advanced imaging technique helps in the real-time identification of hyperfunctioning parathyroid tissue, thereby reducing guesswork and enabling highly targeted excision. With ICG, surgeons can optimize localization, even in complex or atypical cases, ensuring the best possible surgical outcome.

A key highlight of our approach is the use of intra-operative parathyroid hormone (PTH) monitoring, which provides immediate biochemical confirmation of complete gland removal. This real-time assessment ensures that the hyperactive gland has been successfully excised, thereby preventing persistent or recurrent hyperparathyroidism.

The integration of 4K visualization, fluorescence imaging, and real-time biochemical evaluation represents a significant advancement in parathyroid surgery. Patients benefit from a minimally invasive technique that ensures smaller incisions, reduced postoperative pain, shorter hospital stays, and quicker recovery—all while maintaining consistently high success rates.

At PSG Hospitals, our commitment to innovation and patient-centered care continues to drive excellence in endocrine surgery. Our advanced endoscopic parathyroidectomy program reflects our ongoing mission to deliver world-class surgical outcomes with safety, precision, and compassion.

அனைவருக்கும்  
இனிய  
புத்தாண்டு  
வாழ்த்துகள்

**2026**

மாஸ்டர் ஹெல்த்  
செக்கப் பேக்கேஜ்  
ரூ. 5500  
இப்பொழுது  
ரூ. 2026  
மட்டுமே!

இந்த ஈழம் 2026 கேரலா மாதம் வரை  
கிடைக்கும்

மேலும்  
விபரங்களுக்கு,  
பிஎஸ்ஜி  
செய்வதும்:





**முழு உடல்  
பரிசோதனை**

பரிசோதனைகள் மற்றும் மருத்துவ ஆலோசனைகள்

**உடனே முன்பதிவு செய்து கொள்ளுங்கள்**

- இரத்த பரிசோதனைகள் • HbA1c - 3 மாத ஏக்கரை அளவு பரிசோதனை
- Lipid Profile • ஏக்கரை மற்றும் கொழுப்பு சத்து பரிசோதனைகள்
- Urine Complete • சிறுநீர் பரிசோதனை • பொது மருத்துவ ஆலோசனை
- USG Abdomen • தல்காவுல்ட் • கிரப்ட்டுகளில் பரிசோதனை
- ECG பரிசோதனை • மகப்பேறு மருத்துவ ஆலோசனை • உணர்வியல் ஆலோசனை
- Chest X-ray PA • கண் மருத்துவ ஆலோசனை • மதுபான பரிசோதனை

**முன்பதிவிற்கு:**  
**82200 13330 | 87540 22880**

பி எஸ் ஜி மருத்துவமனை, பீளமேடு, கோவை-641 004.

[www.psghospitals.com](http://www.psghospitals.com)



## PSG HOSPITALS – OFFICIAL HEALTHCARE PARTNER : Walkaroo Marathon 2025

PSG Hospitals proudly served as the Official Healthcare Partner for the Walkaroo Marathon 2025, a landmark sporting event that witnessed the enthusiastic participation of 25,000 runners from across the region. The marathon stood as a celebration of fitness, endurance, and community spirit, and PSG Hospitals was honoured to ensure the health and safety of every participant throughout the event.



With meticulous planning and clinical preparedness, PSG Hospitals deployed a comprehensive on - ground medical support system, including fully equipped ambulances, emergency response teams, doctors, physiotherapists, nurses, and trained paramedical staff at strategic points along the marathon route and at the venue. Rapid - response first-aid stations were set up to manage dehydration, fatigue, muscle injuries, and other medical emergencies, ensuring timely and effective care.

The event was executed seamlessly with zero major medical incidents, reflecting the efficiency, preparedness, and commitment of the PSG Hospitals healthcare team. Our presence reinforced the importance of medical readiness in large-scale public events and highlighted our expertise in emergency care and mass-participant health management.



PSG Hospitals extends its appreciation to Walkaroo for the opportunity to partner in this prestigious event and congratulates all participants for their inspiring spirit and dedication to fitness. As a trusted healthcare institution, PSG Hospitals remains committed to promoting healthy lifestyles and supporting community-driven initiatives that encourage wellness, prevention, and active living.

**TOGETHER, WE RAN FOR HEALTH, SAFETY, AND  
A STRONGER COMMUNITY.**



# PSG Hospitals

Peelamedu, Coimbatore - 641 004,  
Tamil Nadu, India. [www.psghospitals.com](http://www.psghospitals.com)

**Care Built on Trust and Expertise**