

# Surviving The Unthinkable



**Successful Neurosurgical Management of  
Severe Craniofacial Trauma  
After a Bear Attack**

**CHIEF PATRON**

Shri. L. Gopalakrishnan  
Managing Trustee PSG & SONS' Charities

**PATRONS**

Dr. J.S.Bhuvaneshwaran  
Dr. T.M.Subba Rao

**Editorial Board:**

Dr. Vimal Kumar Govindan  
Dr. Pavai Ganesan  
Dr. Varunn

## KADAMBARI-2026: A Grand Musical Tribute to 100 Years of Charity

PSG & Sons' Charities successfully concluded the Kadambari-2026 Music Fest, held from 2nd to 5th January 2026 at the PSG IMS&R Auditorium, PSG Hospitals Campus, Coimbatore. The four-day cultural celebration marked 100 glorious years of charity and service, blending tradition, talent, and timeless music.

The festival commenced with "Dharma Swarangaal", a vibrant light music presentation by the students of PSG Institutions, followed by the presentation of the Kalai Sudar Award for outstanding student performers.



Day two featured "Dasavathara Dharmam", a classical dance programme by PSG students, followed by the Award Ceremony where the Yuva Kalarathna Award was conferred. The evening concluded with a captivating classical Carnatic concert "Madhura Sangeeth" by Smt. S. Aishwarya & Kumari S. Saundarya, delighting the audience with their soulful renditions.



On the third day, "Dharma Marga", a Carnatic music programme by the Department of Carnatic Music, PSG College of Arts & Science, set the tone for an

unforgettable performance by Padma Shri & Padma Bhushan awardee Smt. Sudha Raghunathan, whose divine and powerful vocals left the audience spellbound.



The festival concluded on a high note with "Ullam Uruguthaiya", a Carnatic music programme by PSG School students, followed by a light classical performance "Dharmam Thalaikkakkum" by renowned musician and singer Mr. Sathya Prakash D, bringing the celebrations to a memorable close.



Kadambari-2026 stood as a true reflection of PSG's commitment to promoting art, culture, and young talent, while honouring a century-long legacy of charity and service.

PSG & Sons' Charities extends heartfelt gratitude to all the distinguished artistes, students, organizers, volunteers, and the audience who made Kadambari-2026 a resounding success.

*Celebrating 100 Years of  
Charity Inspiring Generations  
Through Music*

## A COMPLEX CRANIOFACIAL TRAUMA FOLLOWING BEAR ATTACK: A Multidisciplinary Neurosurgical Success

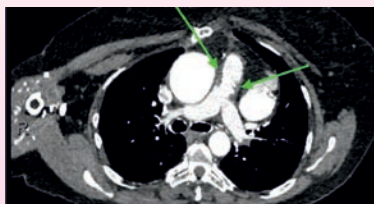


**Dr. THIRUMOORTHY**  
Head -  
Department of Neuro Surgery

Wild animal attacks causing severe craniofacial trauma are rare and represent one of the most challenging situations in neurosurgical practice. These injuries are often contaminated, multi-systemic, and associated with high risk of infection and neurological complications. We report a complex case of a young male who sustained devastating craniofacial and limb injuries following a bear attack and was successfully managed through timely surgical intervention and multidisciplinary care.

A 21-year-old male was brought to the emergency department with a history of bear attack at his workplace in Valparai. He had initially received treatment at a local hospital and was referred for advanced care. On arrival, he was conscious and oriented with a Glasgow Coma Scale (GCS) score of 15/15. Pupils were equal and reactive, and he moved all four limbs. Multiple scalp and facial lacerations and a deep wound over the left forearm were noted.

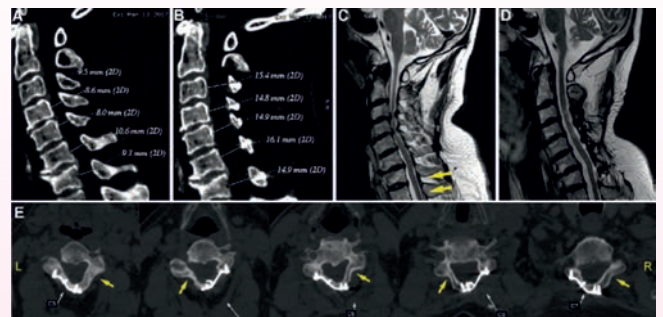
CT imaging of the brain revealed thin extra-axial hemorrhage in



the right frontal region, comminuted displaced and depressed fractures involving bilateral frontal sinuses and right frontal skull vault, and a linear fracture of the sphenoid bone. The cervical spine was normal. Given the open and contaminated nature of the fractures, early surgical intervention was planned.

Under general anesthesia, a bicoronal incision was performed. All comminuted and contaminated bone fragments were excised. The dura was found to be intact. As the fractured bone was not suitable for replacement, reconstruction of the left frontal region was carried out using a pedicled pericranial flap, reinforced with titanium mesh and plates. Simultaneously, thorough wound debridement and secondary suturing of the left forearm injury were performed by the plastic surgery team.

Postoperatively, the patient was managed in the neurosurgical intensive care unit with antibiotics, antiepileptics, anti-edema measures, and supportive care. Serial neurological examinations remained normal. Follow-up CT scans showed stable postoperative changes without mass effect or midline shift. Early physiotherapy was initiated, and all wounds demonstrated healthy healing.



At discharge, the patient was conscious, neurologically intact, and hemodynamically stable. This case highlights that even severe craniofacial trauma following wild animal attacks can be managed successfully with prompt diagnosis, meticulous surgical technique, and coordinated multidisciplinary care, leading to excellent functional and neurological outcomes.

## A COMPLEX KIDNEY FAILURE CASE SUCCESSFULLY MANAGED AT PSG IMSR & HOSPITALS: Advanced Nephrology Care | Timely Dialysis | Multidisciplinary Excellence



**Dr. ARIVALAGAN**  
Department of Nephrology

Chronic Kidney Disease (CKD) is often called a “silent threat” - especially in patients with long-standing diabetes and hypertension. When detected late, it can rapidly progress to life-threatening renal failure requiring dialysis. Recently, the Department of Nephrology at PSG IMSR & Hospitals managed a highly complicated case that demonstrates the importance of timely intervention, structured dialysis planning, and coordinated specialty care.

### The Clinical Challenge:

**A 62-year-old male with a background history of:**

- Type 2 Diabetes Mellitus
- Essential Hypertension
- Coronary Artery Disease
- Ischemic Heart Disease

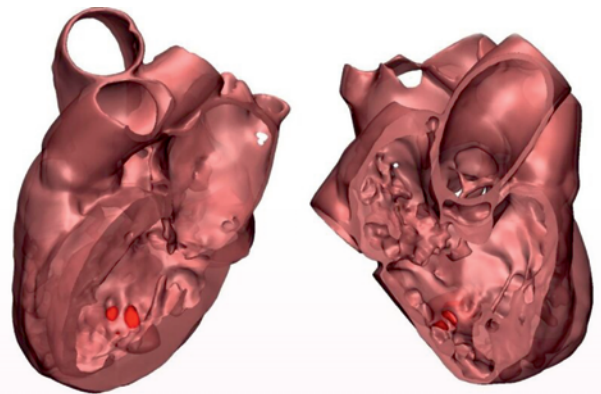
**Presented with progressive symptoms including:**

- Bilateral pedal edema
- Breathlessness on exertion
- Loss of appetite

- Generalized weakness
- Reduced urine output

### Laboratory findings revealed:

- Rising creatinine levels (progressively worsening renal function)
- Severe anemia (Hemoglobin 7.6 g/dL)
- Nephrotic range proteinuria
- Hyperkalemia (dangerously high potassium levels)
- Severe metabolic acidosis
- Volume overload



Ultrasound imaging showed small-sized kidneys, indicating chronic irreversible damage. The condition had advanced to Severe Chronic Kidney Disease (End-Stage Renal Failure).

This was a medically complex scenario - involving cardiac risk, electrolyte imbalance, fluid overload, and severe renal dysfunction - all at the same time.

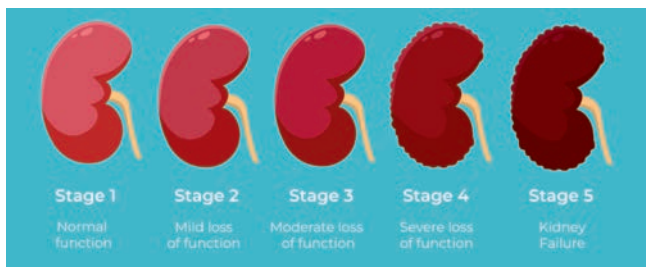
### Critical Decision - Initiation of Hemodialysis:

**Initially, the patient was managed conservatively with:**

- IV diuretics
- Anti-hyperkalemic therapy

- Bicarbonate correction for acidosis
- Blood pressure control
- Glycemic regulation

However, due to worsening renal parameters and persistent symptoms, emergency hemodialysis was initiated via a right Internal Jugular Vein (IJV) catheter.



Dialysis was started after detailed counselling of the patient and family regarding the necessity of renal replacement therapy.

### Establishing Permanent Dialysis Access:

**Long-term dialysis requires a reliable vascular access. After careful evaluation and AV fistula mapping:**

- A Left Brachiocephalic Arteriovenous (AV) Fistula was surgically created
- The procedure was uneventful
- The fistula is functioning well

This ensures safe and effective long-term hemodialysis access for the patient.

### Comprehensive Multidisciplinary Care:

**Managing advanced kidney failure in a patient with cardiac comorbidities requires coordinated teamwork. At PSG IMSR & Hospitals, this case was handled by:**

- Senior Nephrologists
- Cardiothoracic & Vascular Surgeons

- Interventional Radiology Team
- Dialysis Technicians
- Renal Dieticians
- Clinical Pharmacists
- Nursing Specialists

### The patient received:

- Structured thrice-weekly hemodialysis
- Anemia management with erythropoietin support
- Electrolyte stabilization
- Strict fluid (800 ml/day) and salt restriction
- Low potassium diabetic renal diet
- AV fistula care education
- HD catheter care protocol
- Vaccination support
- Continuous monitoring of renal profile

### Clinical Outcome:

**With timely dialysis initiation and aggressive management:**

- Fluid overload improved
- Metabolic parameters stabilized
- Breathing discomfort reduced
- Blood pressure controlled
- Dialysis well tolerated
- Patient discharged in stable condition
- Scheduled for structured nephrology follow-up

This case highlights how advanced renal failure - even with multiple systemic complications - can be stabilized through evidence-based protocols and experienced clinical judgment.

## Why Early Screening is Essential:

Diabetes and hypertension are the leading causes of CKD in India. Unfortunately, many patients do not undergo routine kidney function tests until symptoms appear - by which time significant damage may already have occurred.

## Warning Signs of Kidney Disease:

- Swelling in legs or face
- Persistent fatigue
- Reduced urine output
- Breathlessness
- Uncontrolled blood pressure
- Poorly controlled diabetes

Early detection can delay or even prevent dialysis.

## Advanced Kidney Care at PSG:

The Department of Nephrology at PSG IMSR & Hospitals offers:

- Advanced Hemodialysis Services

AV Fistula Creation & Vascular Access Care

CKD Management Clinics

Diabetic Kidney Disease Programs

Anemia in CKD Treatment

Renal Nutrition Counselling

Dialysis Monitoring & Follow-Up

Transplant Coordination Support

## Warning Signs of Kidney Disease:

Kidney disease progresses silently - but timely action can change outcomes dramatically.

If you are diabetic, hypertensive, or have heart disease, schedule regular kidney function tests.

**When kidneys fail, expertise matters.**

At PSG IMSR & Hospitals, we combine clinical excellence with compassionate care - restoring stability, dignity, and hope in even the most complex renal cases.



# SANJEEVANI

## MEDICINES @ YOUR DOORSTEP

மருந்து, மாத்திரைகள் டோர் டெலிவரி மற்றும்  
கூரியர் மூலமாக அனுப்பும் வசதி

CONTACT: **82203 33747**

## MANAGING A HIGH-RISK PREGNANCY WITH PORTAL VEIN THROMBOSIS: A Complex Multispecialty Case at PSG IMSR & Hospitals



Pregnancy itself is a delicate physiological state. When combined with severe blood abnormalities and a rare vascular liver condition, it becomes a highly complex, high-risk scenario requiring coordinated, expert-driven care.

At PSG IMSR & Hospitals, the Department of Obstetrics & Gynaecology recently managed a challenging case of early pregnancy complicated by pancytopenia and Extrahepatic Portal Vein Obstruction (EHPVO) - a rare and potentially life-threatening condition.

### The Clinical Challenge:

**A 23-year-old woman, pregnant for the first time (9 weeks + 3 days), was referred for evaluation after routine investigations revealed:**

- Severe anemia (Hemoglobin as low as 5.8 g/dL)
- Low white blood cell count
- Critically low platelet count (40,000–45,000)
- Splenomegaly (enlarged spleen measuring 22 cm)

She had no major complaints at presentation but had a recent history of fever. Despite being clinically

stable, her blood parameters indicated pancytopenia, a serious condition affecting all three blood cell lines.

**In pregnancy, pancytopenia significantly increases the risk of:**

- Severe maternal anemia
- Infections
- Bleeding complications
- Fetal growth issues
- Life-threatening hemorrhage

This was not a routine antenatal case - it required urgent, structured evaluation.

### Advanced Diagnostic Evaluation:

**A comprehensive multidisciplinary workup was initiated involving:**

- Obstetrics & High-Risk Pregnancy Team
- Internal Medicine
- Gastroenterology
- Hematology evaluation

**Investigations revealed:**

- Very low ferritin (severe iron deficiency)
- Weakly positive Direct Antiglobulin Test (DAT)
- Ultrasound abdomen showing:
  - ❑ Grade 1 fatty liver
  - ❑ Cavernous transformation of the portal vein
  - ❑ Multiple perisplenic and lienorenal collaterals
  - ❑ Massive splenomegaly

Gastroenterology consultation confirmed the diagnosis of:

### Extrahepatic Portal Vein Obstruction (EHPVO):

This condition leads to portal hypertension and increases the risk of:

- Upper gastrointestinal bleeding
- Variceal hemorrhage
- Severe anemia
- Pregnancy-related complications



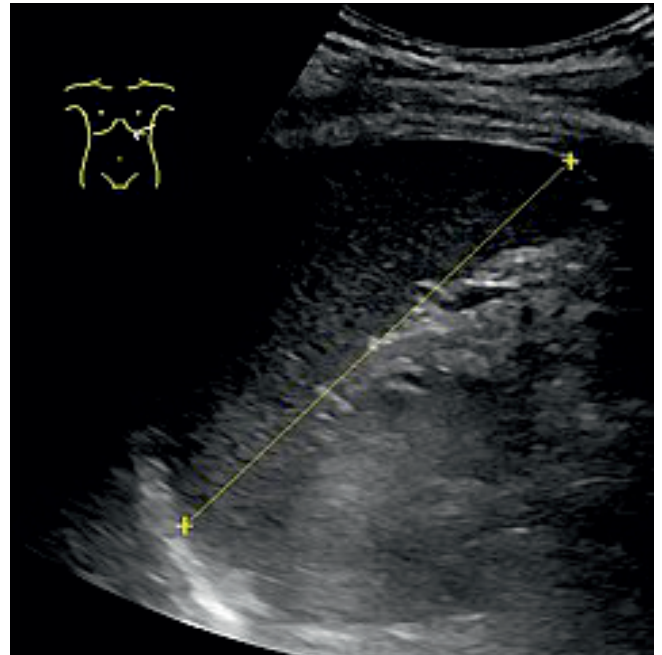
Managing EHPVO during pregnancy demands meticulous planning and close surveillance.

### A Structured High-Risk Pregnancy Plan:

The team at PSG IMSR & Hospitals developed a detailed care roadmap:

- Classification as High-Risk Pregnancy
- Maintenance of hemoglobin above 8 g/dL
- Iron and folic acid supplementation
- Close monitoring for GI bleeding
- Planned Doppler assessment of hepatic circulation

- Upper GI endoscopy in second trimester
- Beta-blocker planning if indicated
- Continuous fetal monitoring



Blood transfusion and parenteral iron infusion were advised due to severe anemia, and all potential maternal and fetal risks were thoroughly explained.

### Why This Case Is Significant:

**Portal vein thrombosis with portal hypertension in early pregnancy is uncommon and carries substantial risk. Combined with pancytopenia and splenomegaly, this case required:**

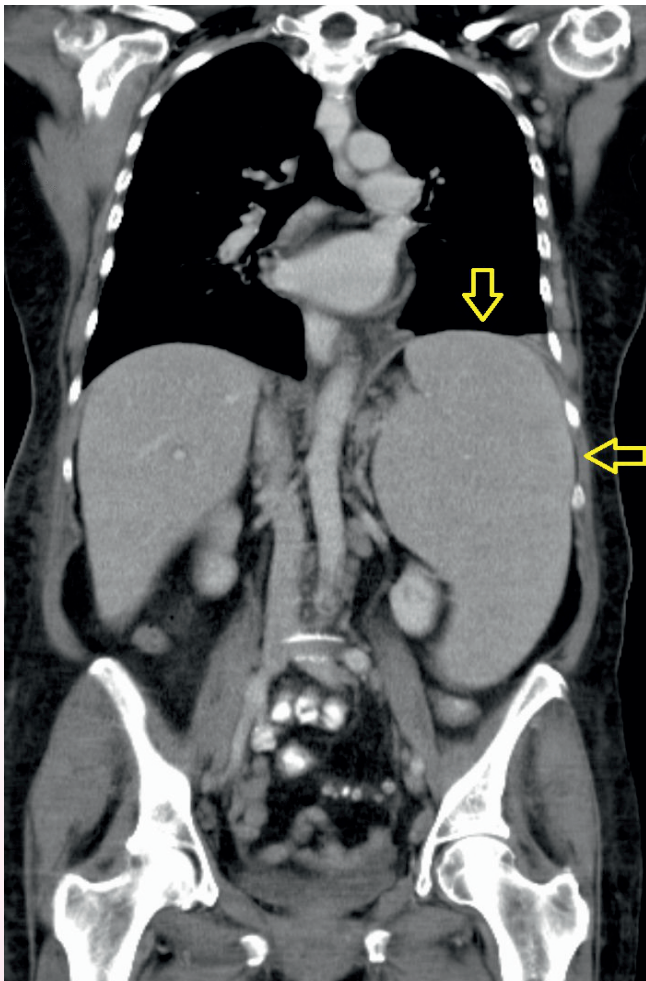
- Early diagnosis
- Multispecialty coordination
- Risk stratification
- Long-term surveillance planning
- Maternal-fetal balancing of treatment options

Such complex cases highlight the importance of delivering obstetric care within a tertiary care setup equipped with critical care backup and specialty support.

### Comprehensive High-Risk Pregnancy Care at PSG:

The Department of Obstetrics & Gynaecology at PSG IMSR & Hospitals offers:

- Dedicated High-Risk Pregnancy Clinics
- Multidisciplinary Maternal Medicine Board
- Fetal Medicine & Advanced Ultrasound Services
- Gastroenterology & Hepatology Support
- Blood Bank & Critical Care Backup
- 24/7 Emergency Obstetric Services



Every high-risk pregnancy is approached with individualized planning, evidence-based protocols, and continuous monitoring to ensure maternal and fetal safety.

### A Message to Expectant Mothers:

Early pregnancy check-ups are vital. Even in the absence of symptoms, routine blood tests can detect life-threatening conditions.

**Seek immediate medical attention if you experience:**

- Black tarry stools
- Vomiting blood
- Severe fatigue
- Dizziness or Postural hypotension
- Excessive bleeding

Pregnancy with underlying medical disorders requires specialized supervision - not routine care.

### Expert Care When It Matters Most:

High-risk pregnancy is not just about delivery - it is about safeguarding two lives through every stage.

At PSG IMSR & Hospitals, we combine obstetric excellence, multispecialty expertise, and compassionate care to manage even the most complex maternal conditions with precision and confidence.

*Advanced Care.  
Structured Monitoring.  
Safer Motherhood.*



## INAUGURATION OF "AMIZHTHINI – MOTHERCRAFT CLINIC"

### *A Dedicated Space for Holistic Maternal Care*

PSG IMSR & Hospitals proudly announces the inauguration of "Amizhthini – Mothercraft Clinic", a specialised maternal wellness clinic located at B Block, OG OP – First Floor.



Amizhthini – Mothercraft Clinic has been thoughtfully established with the vision of providing comprehensive and holistic care for pregnant women and mothers. Beyond physical health, the clinic focuses on nurturing the emotional and psychological well-being of women, supporting them through every stage of pregnancy and early motherhood.



The clinic offers structured guidance and compassionate care, empowering women with the knowledge and emotional strength required for a healthy and confident motherhood journey.

### Key Services at Amizhthini – Mothercraft Clinic:

- Antenatal counselling for expectant mothers
- Emotional and mental well-being support for pregnant women and new mothers
- Pregnancy education and guidance, enabling informed decision-making and healthy motherhood practices

Designed as a warm, nurturing, and supportive space, Amizhthini – Mothercraft Clinic brings together personalised counselling, evidence-based education, and emotional support under one roof. The clinic aims to create a positive, reassuring environment where mothers feel heard, cared for, and guided with empathy and expertise.



With the launch of Amizhthini – Mothercraft Clinic, PSG Hospitals reaffirms its commitment to enhancing maternal health outcomes and ensuring a joyful, informed, and emotionally supported pregnancy and motherhood experience for women and their families.

### For further information:

📞 0422 - 458 7000

***Amizhthini –  
Nurturing Mothers.  
Shaping Healthy Beginnings.***

## PSG HOSPITALS SUPER SPECIALITY INAUGURATES ADVANCED CATH LAB: Strengthening Cardiac Care in Coimbatore

PSG Hospitals Super Speciality proudly marked a significant milestone in advanced cardiac care with the successful inauguration of its state-of-the-art Advanced Cath Lab in the Department of Cardiology on 21st January 2026.



The newly commissioned Cath Lab features the AI-powered Allia IGS 5 Cardiac Suite (GE Healthcare), equipped with the latest imaging and interventional technologies designed to enhance precision, safety, and clinical outcomes in cardiac procedures. This advanced facility reinforces PSG Hospitals' commitment to providing world-class cardiac care to patients across Coimbatore and the Kongu region.

A key highlight of the new installation is the Allia IGS-520 system with advanced AI-driven imaging,



enabling cardiologists to perform complex diagnostic and interventional procedures with superior clarity and reduced radiation exposure. The centre is also the first in Tamil Nadu to install the latest version of Allia Autoright, setting a new benchmark in cath lab automation and workflow efficiency.

The facility is further strengthened by cutting-edge 3D stent visualisation technology, offering cardiologists improved accuracy in coronary stenting procedures. In addition, the Cath Lab is seamlessly integrated with other advanced imaging modalities including Echo, OCT, IVUS and FFR, enabling comprehensive assessment and

personalised treatment planning for patients with complex cardiac conditions.

Speaking on the occasion, the leadership of PSG Hospitals expressed that the launch of the Advanced Cath Lab reflects the institution's continuous investment in innovation, technology and clinical excellence. "Our goal is to bring the most advanced cardiac care closer to our community, ensuring timely, precise and safe interventions for patients with heart disease," the management stated.

With a legacy of excellence and a strong focus on patient-centred care, PSG Hospitals continues to expand its infrastructure and expertise in cardiology. The new Advanced Cath Lab is expected to significantly enhance the hospital's capacity to manage high-risk cardiac cases, perform minimally invasive procedures, and deliver better long-term outcomes for patients.

This landmark inauguration further positions PSG Hospitals Super Speciality as a leading destination for advanced cardiac care in Tamil Nadu.

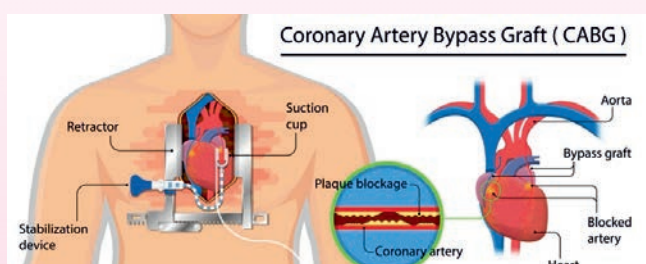
## TRIUMPH OVER TRIPLE VESSEL DISEASE: Successful Quadruple Bypass in a High-Risk Elderly Patient



**Dr. P.R. Murugesan**  
Department of  
Cardiothoracic & Vascular Surgery

Managing advanced coronary artery disease in elderly patients with multiple comorbidities is always a clinical challenge. This case highlights the successful surgical management of a 67-year-old gentleman diagnosed with severe Triple Vessel Disease (TVD), compounded by Type 2 Diabetes Mellitus and long-standing systemic hypertension.

The patient presented with persistent chest pain and had previously undergone coronary angiography confirming significant multivessel coronary artery disease. Despite preserved left ventricular function (Ejection Fraction 58%), the extent of arterial blockages placed him at high risk for major adverse cardiac events. Given the complexity of the lesions and involvement of major coronary branches, surgical revascularization was deemed the most appropriate strategy.



After comprehensive preoperative optimization - including strict glycemic control and cardiovascular

assessment - the patient underwent Coronary Artery Bypass Grafting (CABG ×4). The procedure involved Left Internal Mammary Artery (LIMA) grafting to the Left Anterior Descending (LAD) artery and Reverse Saphenous Vein Grafts (RSVG) to the Major Obtuse Marginal (OM), Terminal OM, and Diagonal branches.

The surgery was performed under cardiopulmonary bypass with meticulous myocardial protection using cardioplegia. Total bypass time was 113 minutes, and aortic cross-clamp time was 63 minutes—well within acceptable limits for a complex quadruple bypass. All target vessels measured approximately 1.75 mm in diameter, requiring precise microvascular anastomosis.

Postoperatively, the patient was managed in the cardiothoracic intensive care unit. He was extubated on Postoperative Day 1 and demonstrated stable hemodynamics throughout recovery. A follow-up echocardiogram showed preserved left ventricular function (EF 57%) with no new regional wall motion abnormalities. Although mild right ventricular dysfunction was noted, it remained clinically stable and required no advanced intervention.

Endocrinology consultation ensured optimal glycemic control - an essential factor in wound healing and graft patency in diabetic patients. The sternotomy and leg graft harvest sites healed well without infection or dehiscence.

He was discharged in a stable condition on dual antiplatelet therapy, beta-blockers, statins, diuretics, and diabetic medications, with advice on incentive spirometry, wound care, and cardiac rehabilitation.

This case underscores the importance of multidisciplinary care, meticulous surgical technique, and vigilant postoperative management in achieving excellent outcomes even in high-risk elderly patients with complex coronary artery disease. Early diagnosis, timely surgical intervention, and comprehensive follow-up remain the pillars of successful cardiac care.

## PSG INSTITUTE OF ONCOLOGY ACHIEVEMENT

### Introducing PIPAC – A Breakthrough in Advanced Cancer Care:

PSG Institute of Oncology has achieved another significant milestone with the successful performance of the PIPAC procedure (Pressurized IntraPeritoneal Aerosol Chemotherapy) for the first time at PSG Hospitals. This advanced treatment marks an important step forward in offering innovative, patient-centric solutions for complex and advanced-stage cancers.

### What is PIPAC?

PIPAC is a minimally invasive, laparoscopic, day-care procedure designed for patients with peritoneal carcinomatosis - a condition where cancer spreads to the lining of the abdomen. It is particularly beneficial for selected patients with advanced (Stage IV) cancers of the stomach, colon, and ovaries, especially those who have already undergone multiple lines of chemotherapy.



### Advanced Drug Delivery for Better Outcomes:

Unlike conventional chemotherapy, PIPAC delivers anti-cancer drugs as a pressurized aerosol (mist) directly into the abdominal cavity. Using laparoscopy, chemotherapy is evenly distributed across the entire peritoneal surface, ensuring:

- Better coverage of tumor surfaces
- Deeper penetration of drugs into tumor tissue
- Reduced systemic side effects compared to traditional intravenous chemotherapy

The controlled pressure plays a key role by forcing the medication deeper into cancer tissues, enhancing its effectiveness while preserving patient safety.

### Clinical Benefits of PIPAC:

- Minimally invasive and well-tolerated
- Short hospital stay / day-care procedure
- Targeted chemotherapy delivery
- Lower systemic toxicity
- Potential to reduce tumor burden and enable future major surgery in selected patients



### A Step Forward in Comprehensive Oncology Care:

The successful introduction of PIPAC reflects PSG Institute of Oncology's commitment to adopting cutting-edge cancer treatments and expanding therapeutic options for patients with advanced disease. Supported by a multidisciplinary team approach and advanced infrastructure, this achievement strengthens PSG Hospitals' role as a leader in comprehensive and innovative cancer care.

PSG Institute of Oncology continues to strive towards excellence by bringing globally recognized, evidence-based cancer therapies closer to patients, with the goal of improving outcomes and quality of life.

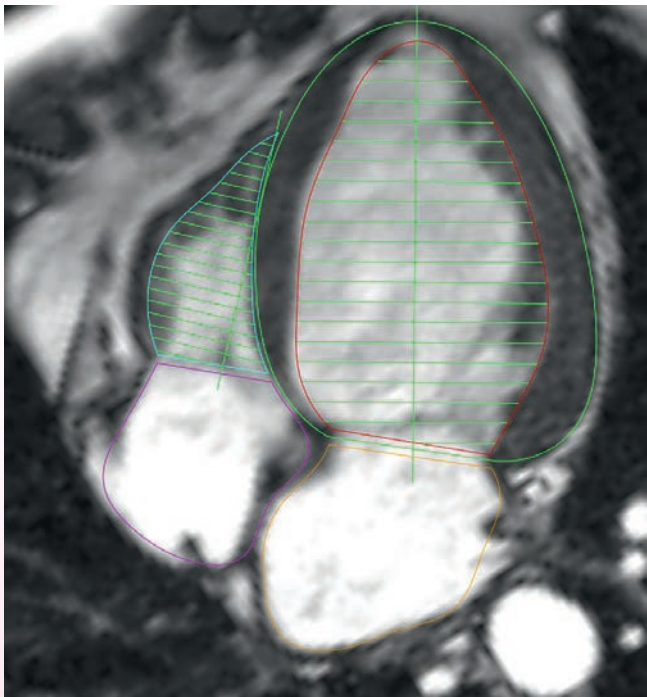
## A MILESTONE IN ADVANCED CARDIAC IMAGING

we achieved a significant milestone with the successful completion of its first Adenosine Stress Cardiac MRI, reinforcing its position as a centre of excellence in advanced cardiac diagnostics.

This achievement marks an important step forward in expanding state-of-the-art, non-invasive, and radiation-free cardiac imaging services, enabling accurate diagnosis and comprehensive evaluation of complex heart conditions.

### What is Stress Cardiac MRI?

Stress Cardiac MRI (Stress CMR) is a highly advanced imaging technique used to assess myocardial ischemia and myocardial viability. By evaluating the heart under controlled stress conditions, Stress CMR plays a critical role in detecting coronary artery disease and guiding timely clinical decision-making.



### Superior Diagnostic Advantage:

Stress Cardiac MRI offers superior diagnostic accuracy when compared to conventional cardiac stress tests such as:

- Stress ECG
- Stress Echocardiography
- Nuclear perfusion studies

It stands apart by providing a comprehensive one-stop assessment in a single examination.

### Comprehensive One-Stop Evaluation:

Stress Cardiac MRI enables detailed assessment of:

- Myocardial perfusion – Identifying areas of reduced blood flow
- Ventricular function – Evaluating cardiac performance and contractility
- Myocardial tissue characterization – Detecting scar, fibrosis, and viability

This integrated approach ensures precise diagnosis while enhancing patient safety and comfort.

### Commitment to Patient-Centric Care:

- Completely non-invasive and radiation-free
- High diagnostic accuracy and image clarity
- Reduced need for multiple investigations
- Safe and well-tolerated for patients

### A Step Forward in Clinical Excellence:

The successful implementation of Stress Cardiac MRI reflects PSG Hospitals' unwavering commitment to clinical excellence, innovation, and patient-centric care. By continuously adopting advanced medical technologies, PSG Hospitals remains dedicated to delivering world-class healthcare and improving patient outcomes.

This milestone further strengthens PSG Hospitals' role as a trusted leader in advanced cardiac care and diagnostic excellence.

## WOMEN'S DAY CELEBRATION AT PSG HOSPITALS

PSG Hospitals and PSG Institute of Medical Sciences & Research celebrated International Women's Day with great enthusiasm and appreciation for the invaluable contributions of women in healthcare. The event was held on 09 March 2026 at the PSG IMSR Auditorium, bringing together faculty members, healthcare professionals, students, and staff to honor the strength, dedication, and achievements of women.



The celebration began with a prayer song by Mr. Ananda Krishnan, Gents Hostel Manager, setting a positive and inspiring tone for the event. This was followed by the welcome address delivered by Dr. R. Karthikeyan, Medical Director, who highlighted the vital role women play in healthcare and society. A special Women's Day video featuring staff from the PSG Health Science Campus was screened, showcasing the dedication and impact of women working across various departments.



The Chief Guest, Dr. M. Umarani, Vice Principal of PSG College of Arts & Science, delivered an inspiring address on the theme "Give to Gain – The Future is in Our Hands." In her speech, she emphasized the importance of empowering women, encouraging leadership, and creating opportunities for growth in every field.

The celebration continued with a vibrant cultural program featuring performances by various teams

including the Dietary, Cafeteria and Mess team, Hospital Counselors, Ladies Hostel Employees,



Nursing team, Teaching Faculties from Allied Health Sciences and Nursing College, and Housekeeping staff and Attenders. Their performances included dance, skits, and creative presentations that reflected the spirit, talent, and unity of the women working within the institution.

A lucky draw session with exciting prizes added fun and excitement to the event, followed by a special program titled "சிங்கப்பெண்ணை : திரை, இயல், இசை தொகுப்பு," presented by distinguished speakers including Shri. L. Sivasakthi Vadivel, Teacher at PSG Primary School; Dr. J. S. Bhuvaneshwaran, Director, SSH; Dr. Jagadeeswararaj, Vice Principal IMSR, and Dr. Bharathwaj, Consultant Medical Oncologist. The session celebrated the strength, creativity, and



achievements of women through literature, cinema, and music.

The program concluded with a vote of thanks by Mrs. Girija, Manager – Students Section, followed by the National Anthem rendered by the Hospital Service Assistants. The celebration ended with hi-tea, providing an opportunity for participants to interact and reflect on the inspiring moments of the day.

The Women's Day celebration at PSG Hospitals served as a meaningful platform to recognize and appreciate the dedication, compassion, and resilience of women who continue to contribute immensely to healthcare and society.

## PSG HOSPITALS CONDUCTS MASTER HEALTH CHECK-UP FOR TODA COMMUNITY

PSG Hospitals recently conducted a Master Health Check-up programme for members of the Toda tribal community from the Nilgiris district. The initiative aimed to promote preventive healthcare and create awareness about the importance of regular health screening among tribal populations.



More than 30 members of the Toda community visited the hospital as a group and underwent comprehensive medical examinations as part of the Master Health Check-up programme. The screening included various diagnostic tests and consultations with doctors to assess their overall health status and identify potential medical conditions at an early stage.



The programme highlighted the importance of early detection and preventive healthcare, particularly for communities living in remote hill regions where access to advanced medical facilities may be limited.

Doctors and healthcare professionals at PSG Hospitals provided guidance on maintaining good health, nutrition, and lifestyle practices.



This initiative reflects PSG Hospitals' continued commitment to community outreach and inclusive healthcare, ensuring that quality medical services reach every section of society, including indigenous and tribal communities. Through such programmes, the hospital strives to enhance health awareness and encourage people to prioritize regular health check-ups for a healthier future.



### PSG Hospitals

**SUPER SPECIALITY**  
2000 Bedded Quaternary Care Hospital



A Teaching Affiliated of PSG Institute of Medical Sciences & Research

P.B. No.1674, Peelamedu, Coimbatore 641004. Phone: 0422 2570170, 4345353.  
Helpline & WhatsApp : 8220013330 | For Emergency : 7449 108 108 | Email : enquiry@psgimsr.ac.in Web : www.psghospitals.com

**WHERE ADVANCED HEALTHCARE TECHNOLOGY & HUMANITY MEET...**



CARE BUILT ON TRUST & EXPERTISE

AFFORDABILITY | ETHICS | SCIENCE | QUALITY | PERSONAL CARE



**PSG Hospitals**  
Peelamedu, Coimbatore - 641 004,  
Tamil Nadu, India. [www.psghospitals.com](http://www.psghospitals.com)

Care Built on Trust and Expertise